



## PUBLIC SAFETY TRAINING CENTER

# SCHEDULE FOR SPRING, SUMMER AND FALL 2025

### SPECIAL NOTE:

Please note locations of courses, as multiple campus sites are being used. *Be sure to select the correct location with associated course code.*

### Locations of PSTC Courses:

- **Westmoreland-Public Safety Training Center**  
65 Public Safety Drive, Smithton, PA 15479
- **Westmoreland-Murrysville**  
6707 Mellon Rd, Export, PA 15632
- **Westmoreland-Advanced Technology Center (Mt. Pleasant)**  
1001 #1009, Technology Dr, Mt Pleasant, PA 15666
- **Latrobe VFD by Westmoreland-PSTC**  
Latrobe VFD, 901 Jefferson St., Latrobe, PA 15650
- **Monroeville PSTC by Westmoreland-PSTC**  
2465 Johnston Rd, Monroeville, PA 15146

### Updates to this Brochure

- PSTC Website should be cross-referenced for any corrections to this brochure post distribution.
- PSTC online schedule version will always be considered the correct version.
- Website: <https://westmoreland.edu/about/locations/public-safety-training-center>

### 2025 CHANGES TO WESTMORELAND-PSTC ONSITE & OFFSITE PROGRAMS

#### EMS Continuing Education Credits (ConEd)

- Westmoreland-PSTC will no longer offer EMS Continuing Education Credits (ConEd).
- However, all approved PSFA courses that are eligible for ConEd, can be submitted to EMS-West via Endorsement.
  - Please contact EMS-West for further assistance in submitting approved certificates of completion for EMS ConEd.

#### Act 155: 17-Year-olds Completing Interior Firefighter

- Due to conflicts with Pennsylvania Commonwealth regulations related to Act 155 and Child and Labor laws, Westmoreland-PSTC will no longer be permitting 17-Year-olds to attend Interior Firefighter, Firefighter I Prep, and Firefighter I Certification exam at Westmoreland-PSTC and associated programs till further notice.
- We recommend you reach out to your local state representative to support getting the conflicts with the regulations resolved.

#### Junior Firefighters (14 & 15-year-olds) and Exterior Firefighter

- Due to conflicts with Pennsylvania Commonwealth regulations related to PSFA training and Child and Labor laws, Westmoreland-PSTC will no longer be permitting 14 & 15-Year-olds to attend Exterior Firefighter (ELEF).
- Minimum age till further notice for Exterior Firefighter (ELEF) is 16-years old.
- We recommend you reach out to your local state representative to support getting the conflicts with the regulations resolved.

#### Certification Prep Programs

- PSTC and associated training site(s) certification prep classes will get priority over all other candidates, to include associated training packages and "Pay-As-You-Go" classes. Exams will be limited based on the exam type.

Firstname  
Lastname  
Resident  
Address  
City, State ZIP

145 Pavilion Lane, Youngwood, PA 15697



Nonprofit Org.  
U.S. Postage  
PAID  
Permit No. 20  
Greensburg, PA



## EMERGENCY MEDICAL SERVICES PROFESSIONALS

### Emergency Medical Technician

Must be 16 years old to register and be able to pass background check – requirements explained first night of class. 16.8 CEUs, Minimum class size is six (6) and maximum class size is twenty-four (24). \$700 Tuition + \$50 lab fee. Required textbook (Emergency Care 14th Edition, ISBN-10: 0136681166, ISBN-13: 978-0136681168), & NREMT exam fee is the responsibility of the student.

#### Course Location for Spring, Summer, and Fall:

- Murrys ville Campus, 6707 Mellon Road, Export, PA 15632

#### Spring 2025 EMT

- Class ID: 16522
- Starts: Monday, January 27 at 6 p.m.
- Monday & Wednesdays, 6-10 p.m., & some Saturdays, January 27, 2025 to May 19, 2025
- Complete Schedule available on website
- Registration Deadline is Monday, January 20 at 4 p.m.

#### Summer 2025 EMT

- Class ID: 16525
- Starts: Tuesday, May 27 at 5:30 p.m.
- Tuesday & Thursday, 5:30-10 p.m., & Saturdays, 8 a.m.-1:30 p.m. or to 5 p.m., May 27, 2024 to August 14, 2025
- Complete Schedule available on website
- Registration Deadline is Monday, May 20 at 4 p.m.

#### Fall 2025 EMT

- Class ID: 16526
- Starts: Monday, September 15 at 6 p.m.
- Monday & Wednesdays, 6-10 p.m., & some Saturdays, September 15, 2025 to January 14, 2026
- Complete Schedule available on website
- Registration Deadline is Monday, September 8 at 4 p.m.

**Course Descriptions Available at**  
[westmoreland.edu/pstc](http://westmoreland.edu/pstc)

**For more information about First Responder classes, contact Marc Jackson, director/Public Safety Training Center, 724.872.2447 or [jacksonmarc@westmoreland.edu](mailto:jacksonmarc@westmoreland.edu).**

## APPARATUS TRAINING

### Emergency Vehicle Operations Training (EVOT)

Student Equipment/Supply Needs: Pen/Pencil, Notebook suitable for classroom and field use, fire fighter protective clothing (day of skills), and proper arrangements for apparatus usage with their department or associate student departments (Apparatus is not required the first day of class). Prerequisite: minimum age of 18+. Minimum class size is ten (10) and maximum class size is thirty (30). \$85 Tuition + \$10 material fee.

#### Spring PSTC

- Class ID: 16539
- Starts: Monday, May 12, 6 p.m.
- Monday & Wednesday, May 12 & 14, 6-10 p.m., & Saturday, May 17, 8 a.m.-4 p.m.

#### Fall PSTC

- Class ID: 16540
- Starts: Tuesday, October 7, 6 p.m.
- Tuesday & Thursday, October 7 & 9, 6-10 p.m., & Saturday, October 11, 8 a.m.-4 p.m.



### Pump Operations I (PUOP)

Student Equipment/Supply Needs: Pen/Pencil, Notebook suitable for classroom and field use, fire fighter protective clothing (day of skills), and proper arrangements for apparatus usage with their department or associate student departments (Apparatus is not required the first day of class). Prerequisite: ELFG or EBM & minimum age of 18+. Minimum class size is ten (10) and maximum class size is thirty (24). \$85 Tuition + \$10 material fee.

#### Spring PSTC

- Class ID: 16541
- Starts: Tuesday, April 8, 6 p.m.
- Tuesday & Thursday, April 8, 10, 15, & 17, 6-10 p.m.

#### Fall PSTC

- Class ID: 16542
- Starts: Tuesday, October 14 at 6 p.m.
- Tuesday & Thursday, October 14 & 16, 6-10 p.m., & Saturday, October 18, 8 a.m.-4 p.m.

## Pump Operations II (PUOA)

Student Equipment/Supply Needs: Pen/Pencil, Notebook suitable for classroom and field use, fire fighter protective clothing (day of skills), and proper arrangements for apparatus usage with their department or associate student departments (Apparatus is not required the first day of class). Prerequisite: PUOP & minimum age of 18+. Minimum class size is ten (10) and maximum class size is thirty (24). \$85 Tuition + \$10 material fee.

### Spring PSTC

- Class ID: 16543
- Starts: Tuesday, April 22 at 6 p.m.
- Tuesday & Thursday, April 22, 24, 29, & May 1, 6-10 p.m.

### Fall PSTC

- Class ID: 16544
- Starts: Tuesday, October 21 at 6 p.m.
- Tuesday & Thursday, October 21 & 23, 6-10 p.m., & Saturday, October 25, 8 a.m.-4 p.m.

## Driver/Operator – Pumper Skills Preparation

Student Equipment/Supply Needs: Pen/Pencil, Notebook suitable for classroom and field use, fire fighter protective clothing (day of skills), and proper arrangements for apparatus usage with their department or associate student departments (Apparatus is not required the first day of class). Prerequisite: PUOP & minimum age of 18+. Minimum class size is six (6) and maximum class size is twenty-four (24). \$65 Tuition + \$10 material fee

### Spring PSTC

- Class ID: 16545
- Starts: Thursday, May 6 at 6 p.m.
- Tuesday & Thursday, May 6, 8, & 13, 6-10 p.m.

### Fall PSTC

- Class ID: 16546
- Starts: Tuesday, October 28 at 6 p.m.
- Tuesday & Thursday, October 28, 30, & November 4, 6-10 p.m.

## Driver/Operator – Pumper Certification

### \$200 Tuition

#### Exam Limited to 20 candidates

Registration/Spot for exam by submitting properly completed application to the PSTC by posted deadline. Application and exam requirements available at: <https://www.pa.gov/en/services/osfc/get-certified-driver-operator-pumper.html>

### Spring PSTC

- Class ID: N/A
- Start: Saturday, May 31, Report Time of 7:30 a.m.
- Saturday, May 31, 8 a.m.-5 p.m.
- Registration Deadline is Friday, May 16 by 4 p.m. at the PSTC.

### Fall PSTC

- Class ID: N/A
- Start: Saturday, November 8, Report Time of 7:30 a.m.
- Saturday, November 8, 8 a.m.-5 p.m.
- Application Deadline is Friday, October 31 by 4 p.m. at the PSTC.

**For more information about First Responder classes, contact Marc Jackson, director/Public Safety Training Center, 724.872.2447 or [jacksonmarc@westmoreland.edu](mailto:jacksonmarc@westmoreland.edu).**

## Aerial Apparatus Operations Extended (AELX)

Student Equipment/Supply Needs: Pen/Pencil, Notebook suitable for classroom and field use, fire fighter protective clothing (day of skills), and proper arrangements for apparatus usage with their department or associate student departments (Apparatus is not required the first day of class). Minimum class size is six (6) and maximum class size is twenty-four (24). Prerequisite: IST or ELIS, & minimum age of 18+, or Firefighter I Certification if taking certification exam. \$125 Tuition + \$10 material fee

### Spring PSTC

- Class ID: 16547
- Starts: Monday, April 14, 6-10 p.m.
- Monday & Wednesday, April 14, 16, 21, & 23, 6-10 p.m., & Sunday, April 27, 8 a.m.-4:30 p.m.

## Driver/Operator - Aerial Apparatus Preparation

Student Equipment/Supply Needs: Pen/Pencil, Notebook suitable for classroom and field use, fire fighter protective clothing (day of skills), and proper arrangements for apparatus usage with their department or associate student departments (Apparatus is not required the first day of class). Prerequisite: Minimum age of 18+, & Firefighter I Certification. \$65 Tuition + \$10 material fee

### Spring PSTC

- Class ID: 16548
- Starts: Thursday, May 1 at 6 p.m.
- Tuesday & Thursday, May 1, 6, & 8, 6-10 p.m.
  - Driver/Operator – Aerial Certification
  - \$200.00 Tuition
  - Exam Limited to 20 candidates
  - Registration/Spot for exam by submitting properly completed application to the PSTC by posted deadline. Application and exam requirements available at: <https://www.osfc.pa.gov/State%20Fire%20Academy/Certification/Certification%20Levels%20Presently%20Offered/Pages/Driver-Operator-Aerial.aspx>
  - Candidate is responsible for proper arrangements for apparatus usage with their department or associate candidate departments; signed letter from associate candidate department permitting use of apparatus is required.
    - Spring PSTC
    - Class ID: N/A
    - Starts: Saturday, May 31, Report Time of 7:30 a.m.
    - Saturday, May 31, 8 a.m.-5 p.m.
    - Application Deadline is Friday, May 16 by 4 p.m. at the PSTC.



**To register, call 724.925.4000**

## UPDATED PROGRAM: Driver/Operator – Mobile Water Supply Skills Preparation with Rural Water Movement Review

Student Equipment/Supply Needs: Pen/Pencil, Notebook suitable for classroom and field use, fire fighter protective clothing (day of skills), and proper arrangements for apparatus usage with their department or associate student departments (Apparatus is not required the first day of class). Prerequisite: ELIS or IST & minimum age of 18+. Minimum class size is six (6) and maximum class size is twenty-four (24). \$85 Tuition + \$10 material fee

### PSTC Spring

- Class ID: 16549
- Starts: Wednesday, April 30 at 6 p.m.
- Wednesdays, April 30, & May 7, 14, & 21, 6-10 p.m.
  - Driver/Operator – Mobile Water Supply Certification Exam
  - \$200.00 Tuition
  - Exam Limited to 20 candidates
  - Registration/Spot for exam by submitting properly completed application to the PSTC by posted deadline. Application and exam requirements available at: <https://www.pa.gov/en/services/osfc/get-certified-driver-operator-mobile-water-supply.html?appld=aemshell>
  - Candidate is responsible for proper arrangements for apparatus usage with their department or associate candidate departments; signed letter from associate candidate department permitting use of apparatus is required.

### Spring PSTC

- Class ID: N/A
- Start: Saturday, May 31, Report Time of 7:30 a.m.
- Saturday, May 31, 8 a.m.-5 p.m.
- Registration Deadline is Friday, May 16 by 4 p.m. at the PSTC.



For more information about First Responder classes, contact Marc Jackson, director/Public Safety Training Center, 724.872.2447 or [jacksonmarc@westmoreland.edu](mailto:jacksonmarc@westmoreland.edu).

## OFFICER DEVELOPMENT

### Introduction to Fire Officership (INFO)

Student Equipment/Supply Needs: Pen/Pencil, Notebook suitable for classroom. Prerequisite: Minimum age of 18+, & ELIF OR Equivalent. Minimum class size is six (6) and maximum class size is twenty-four (24). \$90 Tuition

### Spring PSTC

- Class ID: 16550
- Starts: January 11 at 8 a.m.
- Saturday & Sunday, January 11 & 12, 8 a.m. – 4 p.m.

### Fire Officer I (Westmoreland Exclusive)

Student Equipment/Supply Needs: Pen/Pencil, Notebook suitable for classroom. Prerequisite: Firefighter II, & minimum age of 18+. Minimum class size is six (6) and maximum class size is twenty-four (24). \$185 Tuition + \$10 material fee

### Spring PSTC

- Class ID: 16551
- Starts: Wednesday, January 29 at 6 p.m.
- Wednesdays, January 29, February 5, 12, & 19, 6-10 p.m., & Sunday, February 2, 9, & 16, 8 a.m.-4 p.m.
- **Fire Officer I Certification Exam**

### PLEASE NOTE PREREQUISITS ARE DIFFERENT FROM CLASS:

Prerequisite: NIMS, Haz. Mat. Ops., Firefighter II and Fire Service Instructor I, & minimum age of 18+. \$200 Tuition. Application and exam requirements available at: <https://www.pa.gov/en/services/osfc/get-certified-fire-officer-1.html>

### Spring PSTC

- Class ID: N/A
- Starts: Sunday, March 2, Report Time of 7:30 a.m.
- Sunday, March 2, 8 a.m.-5 p.m.
- Application Deadline is Friday, February 28 by 4 p.m.

### Educational Methodologies for Local Level Instructors (EMLL)

Student Equipment/Supply Needs: Pen/Pencil, Notebook suitable for classroom & IFSTA Fire and Emergency Services Instructor, 9th Edition (required). Prerequisite: minimum age of 18+, recommended experience with word processing and visual presentation software. Minimum class size is six (6) and maximum class size is twenty-four (24). \$145 Tuition + \$10 material fee

### PSTC Spring

- Class ID: 16552
- Starts: Monday, February 24 at 6 p.m.
- Monday & Wednesdays, February 24 & 26, March 3, 5, 10, 12, 17, 19, 24, 26, 31, & April 2, 6-10 p.m.
  - Monday, February 24 – Review of skills for exam
  - Wednesday, April 2 – PSFA Instructor expectations, if preparing to be an PSFA instructor
  - Instructor I Pro Board / IFSAC Written & Skills Exam
    - Application and exam requirements will be provided in class.
    - \$200 Tuition
    - Class ID: N/A
    - Starts: Sunday, April 13 Report Time 7:30 a.m.
    - Sunday, April 13, 8 a.m.-5 p.m.
    - Application Deadline is Friday, April 4



### Cancer Prevention (Westmoreland Exclusive)

Student Equipment/Supply Needs: Pen/Pencil, Notebook suitable for classroom. Prerequisite: minimum age of 14+. \$35 Tuition

#### Spring PSTC

- Class ID: 16590
- Starts: Thursday, March 13 at 6 p.m.
- Thursday, March 13, 6-10 p.m.

#### Fall PSTC

- Class ID: 16591
- Starts: Tuesday, October 28 at 6 p.m.
- Tuesday, October 28, 6-10 p.m.

### Incident Safety Officer (NFA) (ISO)

Student Equipment/Supply Needs: Pen/Pencil, Notebook suitable for classroom. Prerequisites: Minimum age: 18 years old at start of course, and NICS-FS or NICS-EMS or ICS and current training in the Haz-Mat First Responder Operations/Refresher level. Student Equipment & Supplies: Pen/Pencil, Notebook. Course is a PSFA CEU program. Total hours = 16, CEUs = 1.6. \$85.00 Tuition

#### Spring PSTC

- Class ID: 16588
- Starts: Saturday, March 15 at 8 a.m.
- Saturday & Sunday, March 15 & 16, 8 a.m.-4 p.m.

#### Fall PSTC

- Class ID: 16589
- Starts: Saturday, November 8 at 8 a.m.
- Saturday & Sunday, November 8 & 9, 8 a.m.-4 p.m.

### Fire Inspector II Professional Certification (NFPA 1031) with Pro Board Exam

Westmoreland PSTC partnership with Bucks County Community College. Student Equipment/Supply Needs: Pen/Pencil, Notebook suitable for classroom. Prerequisites: Age 18 and up Fire Inspector 1 Professional Certification. Minimum class size is ten (10) and maximum class size is twenty-four (24). \$225.00 Tuition (includes Pro Board exam) PLEASE NOTE: Program is not eligible for PSTC "Exclusive Package."

#### Spring PSTC

- Class ID: 16660
- Starts: Friday, March 14 at 6 p.m.
- Friday, March 14 & 21, 6-10 p.m., & Saturday & Sunday, March 15, 16, 22, & 23, 8 a.m.-4 p.m.
- Exam at the end of class, Application provided in class, contact director if challenging.
- PLEASE NOTE: Program is not eligible for PSTC "Exclusive Package."

### Fire Service Instructor II (Westmoreland Exclusive)

Student Equipment/Supply Needs: Pen/Pencil, Notebook suitable for classroom and IFSTA Fire and Emergency Services Instructor, 9th Edition (required). Prerequisites: 1041 Fire Instructor I certification or completion of the Educational Methodology for Local Level Instructors(s). Minimum class size is six (6) and maximum class size is twenty-four (24). \$225 Tuition PLEASE NOTE: Program is not eligible for PSTC "Exclusive Package."

#### Fall PSTC

- Class ID: 16661
- Starts: Monday, November 3 at 6 p.m.
- Monday & Wednesday's, November 3, 5, 10, 12, 17, 19, 24, & December 1, 6-10 p.m. and Saturday Dec. 6, 8 a.m.-4 p.m.
- Exam at the end of class, Application provided in class, contact director if challenging.
- PLEASE NOTE: Program is not eligible for PSTC "Exclusive Package."



## FIRE SUPPRESSION

### Fire Dynamics: - Practical Applications (Westmoreland Exclusive)

Student Equipment/Supply Needs: Pen/Pencil, Notebook suitable for classroom. Prerequisite: Minimum age of 14+, & ELEF or Equivalent. \$35 Tuition + \$10 lab fee

#### Spring PSTC

- Class ID: 16592
- Starts: Tuesday, March 18 at 6 p.m.
- Tuesday, March 18, 6-10 p.m.

#### Fall PSTC

- Class ID: 16593
- Starts: Tuesday, November 4, at 6 p.m.
- Tuesday, November 4, 6-10 p.m.

### Structural Burn Session (SBS) Night Burn

Student Equipment/Supply Needs: Pen/Pencil, Notebook suitable for classroom, TOG, SCBA, & spare cylinder. Prerequisite: Minimum age of 18+, ELIF with "Live Fire," SBS, or Firefighter I. Minimum class size is sixteen (16) and maximum class size is twenty-four (24) students. \$175 Tuition + \$25 lab fee

#### Spring PSTC

- Class ID: 16594
- Starts: Monday, April 7 at 6 p.m.
- Monday & Wednesday, April 7 & 9, 6-10 p.m., & Saturday, April 12, 6 p.m.-2 a.m.

#### Fall PSTC

- Class ID: 16595
- Starts: Monday, October 6 at 6 p.m.
- Monday & Wednesday, October 6 & 8, 6-10 p.m., & Saturday, October 11, 6 p.m.-2 a.m.

### Forcible Entry (TFE)

Prerequisites: Minimum age: 18 years old at start of course, and ELIF or EBM. Student Equipment & Supplies: Pen/Pencil, Notebook; helmet, gloves, turnout coat, turnout pants, boots, protective hood, and protective eyewear (safety glasses or goggles), and SCBA and spare cylinder required. Course is a PSFA CEU program. Total hours = 16, CEUs = 1.6. \$55 Tuition + \$35 lab fee

#### Spring PSTC

- Class ID: 16596
- Starts: Saturday, April 12 at 6 p.m.
- Saturday & Sunday, April 12 & 13, 8 a.m.-4 p.m.



### Electric Vehicle (EV) Fire/Crash Operations (Westmoreland Exclusive)

Prerequisites: Minimum age: 18 years old at start of course & ELEF. Student Equipment & Supplies: Pen/Pencil, Notebook, TOG, SCBA, & Spare Cylinder. Course is a WCCC CEU program. Total hours = 8, CEUs = 0.8. \$75 Tuition + \$25 lab fee

#### Spring PSTC

- Class ID: 16671
- Starts: Sunday, April 13 at 8 a.m.
- Sunday, April 13, 8 a.m.-4 p.m.

#### Fall PSTC

- Class ID: 16672
- Starts: Sunday, October 26 at 8 a.m.
- Sunday, October 26, 8 a.m.-4 p.m.

### Engine Company Operations (ECOP) with Advanced Burn Night

Prerequisites: Minimum age: 18 years old at start of course, and ELIF or EBM or FF I certification. Student Equipment & Supplies: Pen/Pencil, Notebook; helmet, gloves, turnout coat, turnout pants, boots, protective hood, and protective eyewear (safety glasses or goggles), and SCBA and spare cylinder required. Course is a PSFA CEU program. Total hours = 24, CEUs = 2.4. Minimum class size is twelve (12) and maximum class size is twenty-four (24). \$150 Tuition + \$25 lab fee

#### Spring Session

- Class ID: 16597
- Starts: Monday, March 31 at 6 p.m.
- 5 Days: Monday & Wednesday, March 31, April 2, 7, & 9, 6-10 p.m., & Saturday, April 12, 6 p.m.-2 a.m.

### Truck Company Operations I (TRCO) with Advanced Burn Night

Prerequisites: Minimum age: 18 years old at start of course and ELIF or EBM. Student Equipment & Supplies: Pen/Pencil, Notebook; helmet, gloves, turnout coat, turnout pants, boots, protective hood, and protective eyewear (safety glasses or goggles), and SCBA and spare cylinder required. Course is a PSFA CEU program. Minimum class size is twelve (12) and maximum class size is twenty-four (24). Total hours = 24, CEUs = 2.4. \$150 Tuition + \$25 lab fee

#### Fall Session

- Class ID: 16598
- Starts: Monday, September 29 at 6 p.m.
- 5 Days: Monday & Wednesday, September 29, October 1, 6, & 8, 6-10 p.m., & Saturday, October 11, 6 p.m.-2 a.m.

## SUPPORT OPERATIONS

### Traffic Incident Management (TIM)

Prerequisites: Minimum age: 14 years old at start of course.  
Student Equipment & Supplies: Pen/Pencil, Notebook, & traffic vest. Course is a PSFA CEU program. Total hours = 4, CEUs = 0.4.  
\$35 Tuition + \$10 lab fee

#### Spring PSTC

- Class ID: 16673
- Starts: Sunday, April 6 at 8 a.m.
- Sunday, April 6, 8 a.m.-noon
  - Optional: Traffic Incident Management Personnel Certification Exam
- Sunday, April 6, 12:30-4:30 p.m.
- Tuition: \$150.00
- Application at: <https://www.pa.gov/services/osfc/get-certified-traffic-incident-management-personnel.html?appld=aemshell>
- Application Due: Friday, March 28 at the PSTC by 4 p.m.

#### Fall PSTC

- Class ID: 16674
- Starts: Sunday, September 28 at 8 a.m.
- Sunday, September 28, 8 a.m.-noon
  - Optional: Traffic Incident Management Personnel Certification Exam
- Sunday, September 28, 12:30-5 p.m.
- Tuition: \$150.00
- Application at: <https://www.pa.gov/services/osfc/get-certified-traffic-incident-management-personnel.html?appld=aemshell>
- Application Due: Friday, September 19 at the PSTC by 4 p.m.



**For more information about First Responder classes, contact Marc Jackson, director/Public Safety Training Center, 724.872.2447 or [jacksonmarc@westmoreland.edu](mailto:jacksonmarc@westmoreland.edu).**



## HAZARDOUS MATERIALS

### HAZMAT Awareness Level (HMAJB)

Student Equipment/Supply Needs: Pen/Pencil, Notebook suitable for classroom. Prerequisite: Minimum age of 14+. Minimum class size is six (6) and maximum class size is twenty-four (24). \$35 Tuition & \$5.00 Material Fee. 100% Attendance required per PSFA MSA.

#### Spring PSTC

- Class ID: 16599
- Starts: Saturday, January 11 at 9 a.m.
- Saturday, January 11, 9 a.m.-3 p.m.
  - Sunday, January 12 - HMA Exam Prep (10-noon), Class ID: 16618
  - Sunday, January 12 - HMA Exam Available (noon-2 p.m.)

#### Spring Latrobe

- Class ID: 16600
- Starts: Sunday, January 12 at 9 a.m.
- Sunday, January 12, 9 a.m.-3 p.m.

#### Spring Monroeville PSTC

- Class ID: 16011
- Starts: Sunday, February 9, 9 a.m.-3 p.m.
- Sunday, February 9, 9 a.m.-3 p.m.

#### Summer PSTC

- Class ID: 16601
- Starts: Tuesday, June 17 at 6 p.m.
- Tuesday & Thursday, June 17 & 19, 6 – 9 p.m.

#### Fall PSTC

- Class ID: 16602
- Starts: Tuesday, September 9 at 6 p.m.
- Tuesday & Thursday, September 9 & 11, 6-10 p.m.
  - Sunday, September 21 - HMA Exam Prep (10-noon), Class ID: 16619
  - Sunday, September 21 - HMA Exam Available (noon-2 p.m.)

#### Fall Latrobe

- Class ID: 16603
- Starts: Saturday, September 13 at 9 a.m.
- Saturday, September 13, 9 a.m.-3 p.m.

**To register, call 724.925.4000**

## Hazardous Materials Awareness (HMA)

### Pro Board / IFSAC Certification Prep and Exam

Completed Application is due at time of exam. Application and exam requirements available at PSFA website. \$75.00 Tuition/ Material Fee (PSFA Exam fee) Prerequisite: Minimum age of 14+, completed application with current PSFA approved HMA or higher certificate of training. Application available at: <https://www.pa.gov/en/services/osfc/get-certified-hazardous-materials-awareness.html?appld=aemshell>

#### Spring PSTC

- Class ID: 16618
- Sunday, January 12 - HMA Exam Prep (10-noon)
- Sunday, January 12 - HMA Exam Available (noon-2 p.m.)

#### Fall PSTC

- Class ID: 16619
- Sunday, September 21 - HMA Exam Prep (10-noon)
- Sunday, September 21 - HMA Exam Available (noon-2 p.m.)

## HAZMAT Operations Level (HMOJB)

Student Equipment/Supply Needs: Pen/Pencil, Notebook suitable for classroom, TOG, SCBA, & spare cylinder. Prerequisite: Minimum age of 16+. No ConEd will be submitted for this program. Minimum class size is ten (10) and maximum class size is thirty (30). \$125 Tuition + \$10 lab fee. Special Note: Murrysville Essentials program will NOT be hosting an HMO class, and students will be required to take the HMO at the PSTC, or provide proof of completion of a current program of HMO or HMO-R. 100% Attendance required per PSFA MSA.

#### Spring PSTC & Latrobe FD (at PSTC)

- Class ID: 16620
- Starts: Tuesday, February 18 at 6 p.m.
- Tuesday & Thursday, February 18, 20, 25, & 27, 6-10 p.m., & Saturday, February 22 & March 1, 8 a.m.-4 p.m.

#### Monroeville PSTC

- Class ID: 16012
- Starts: Monday, March 24 at 6 p.m.
- Monday & Wednesday, March 24, 26, 31, & April 2, 6-10 p.m., & Saturday & Sunday, April 5 & 6, 9 a.m.-5 p.m.

#### Fall PSTC & Latrobe FD (at PSTC)

- Class ID: 16621
- Starts: Saturday, October 18 at 8 a.m.
- Monday, Tuesday, Wednesday, & Thursday, October 20, 21, 22, & 23, 6-10 p.m., & Saturday & Sunday, October 18 & 19, 8 a.m.-4 p.m.

## Hazardous Materials Operations (HMO)

### Pro Board / IFSAC Certification Exam Prep

Student Equipment/Supply Needs: Pen/Pencil, Notebook suitable for classroom, TOG, SCBA, & spare cylinder. Prerequisite: Minimum age of 16+, current HMO or R certificate of completion and HMA Pro Board Certification. \$75.00 Tuition + \$10.00 Material Fee

#### Spring PSTC

- Class ID: 16622
- Starts: Sunday, May 4 at 8 a.m.
- Sunday, May 4, 8 a.m.-4 p.m.

#### Fall PSTC

- Class ID: 16623
- Starts: Sunday, November 16 at 8 a.m.
- Sunday, November 16, 8 a.m.-4 p.m.

## Hazardous Materials Operations (HMO)

### Pro Board / IFSAC Certification Exam

Application and exam requirements available at PSFA website. \$200.00 Tuition. Prerequisite: Minimum age of 16+, completed application with current PSFA approved HMA Pro Board certificate of training. Exam is limited to 30 candidates, and PSTC prep program students have first spots.

#### Spring PSTC

- Class ID: N/A
- Saturday, May 17, Report Time 7:30 a.m.
- Application Deadline is Friday, May 9 by 4 p.m.

#### Fall PSTC

- Class ID: N/A
- Sunday, November 23, Report Time 7:30 a.m.
- Application Deadline is Monday, November 17 by 4 p.m.



## HAZMAT Operations Level Refresher (HMORJB)

Student Equipment/Supply Needs: Pen/Pencil, Notebook suitable for classroom, & TOG, SCBA & spare cylinder. Prerequisite: Minimum age of 16+, & HMO/R. Minimum class size is six (6) and maximum class size is twenty-four (24). \$45 Tuition + \$10 lab fee

#### Spring PSTC

- Class ID: 16624
- Starts: Sunday, April 13 at 9 a.m.
- Saturday, April 13, 9 a.m.-3 p.m.

#### Fall PSTC

- Class ID: 16625
- Starts: Saturday, October 11 at 9 a.m.
- Saturday, October 11, 9 a.m.-3 p.m.

**For more information about HAZMAT classes, contact Marc Jackson, director/Public Safety Training Center, 724.872.2447 or [jacksonmarc@westmoreland.edu](mailto:jacksonmarc@westmoreland.edu).**

## PENNSYLVANIA ENTRY LEVEL FIREFIGHTING

Pennsylvania Entry Level firefighting is comprised of seven different modules. Completion of all modules provides for the basis of more advanced training. Classes must be completed in order. Essentials of Fire Fighting, Seventh Edition by International Fire Service Training Association (IFSTA) is required. A FREE skill booklet is provided. Students must provide a full set of turnout gear and a 20 ft. piece of rope (min. 7/16" dia.). Certificates are awarded upon successful completion of each course. Junior firefighters (14+) may attend the first three courses. Minimum age for Interior Firefighter is 17+ at the onset of the class. Minimum class size is ten (10) and maximum class size is thirty (30) **Essentials of Firefighting Books are available for rent at \$10.00 per student per semester – limited quantities available**

### Essentials Series Quick Glance per Location:

See individual course description below for requirements and cost.

#### PSTC Spring:

- ELIS, starts: Saturday, January 4 at 8 a.m.
- HMA, starts: Saturday, January 11 at 9 a.m.
- ELFG, starts: Tuesday, January 14 at 6 p.m.
- ELEF, starts: Tuesday, January 28 at 6 p.m.
- HMO, starts: Tuesday, February 18 at 6 p.m.
- ELIF, starts: Tuesday, March 4 at 6 p.m.

#### Latrobe FD Spring:

- ELIS, Starts: Saturday, January 4 at 8 a.m.
- HMA, Starts: Sunday, January 12 at 9 a.m.
- ELFG, Starts: Monday, January 13 at 6 p.m.
- ELEF, Starts: Monday, January 27 at 6 p.m.
- HMO, At PSTC and is the Spring PSTC program, Class ID: 16620
- ELIF, Starts: Monday, March 3 at 6 p.m.

#### Monroeville PSTC Spring:

- ELIS, starts: Wednesday, January 22 at 6 p.m.
- HMA, starts: Sunday, February 9 at 9 a.m.
- ELFG, starts: Wednesday, February 12 at 6 p.m.
- ELEF, starts: Monday, March 3 at 6 p.m.
- HMO, starts: Monday, March 24 at 6 p.m.
- ELIF, starts: Wednesday, April 9 at 6 p.m.

#### PSTC Summer:

- ELIS, starts: Tuesday, June 3 at 6 p.m.
- HMA, starts: Tuesday, June 17 at 6 p.m.
- ELFG, starts: Tuesday, June 24 at 6 p.m.
- ELEF, starts: Tuesday, July 22 at 6 p.m.

#### PSTC Fall:

- ELIS, starts: Tuesday, September 2 at 6 p.m.
- HMA, starts: Tuesday, September 9 at 6 p.m.
- ELFG, starts: Tuesday, September 16 at 6 p.m.
- ELEF, starts: Tuesday, September 30 at 6 p.m.
- HMO, starts: Saturday, October 18 at 8 a.m.
- ELIF, starts: Saturday, October 25 at 8 a.m.

#### Latrobe FD Fall:

- ELIS, Starts: Wednesday, September 3 at 6 p.m.
- HMA, Starts: Saturday, September 13 at 9 a.m.
- ELFG, Starts: Monday, September 15 at 6 p.m.
- ELEF, Starts: Monday, September 29 at 6 p.m.
- HMO, At PSTC and is the Fall PSTC program, Class ID: 16621
- ELIF, Starts: Sunday, October 26 at 8 a.m.



### Introduction to the Fire Service (ELIS) with CPR/First Aid

This entry level course is designed to introduce new firefighters to basic information including an overview of the fire service, fire service organization, firefighter safety, personal protective equipment, tools and emergency lighting, and backing apparatus. In addition, the student will complete American Heart Association (AHA) First Aid & CPR. This is the first of five levels (courses) in the curriculum. Student Equipment/Supply Needs: Pen/Pencil, Notebook suitable for classroom, Essentials of Fire Fighting, 6th Edition & TOG. Prerequisite: Minimum age of 14+. \$100 Tuition + \$35 Material Fee (AHA cards)

#### Spring PSTC

- Class ID: 16626
- Starts: Saturday, January 4 at 8 a.m.
- Tuesday & Thursday, January 7 & 9, 6-10 p.m., & Saturday & Sunday, January 4 & 5, 8 a.m.-4 p.m.

#### Spring Latrobe FD

- Class ID: 16663
- Starts: Saturday, January 4 at 8 a.m.
- Monday & Wednesday, January 6 & 8, 6-10 p.m., & Saturday & Sunday, January 4 & 5, 8 a.m.-4 p.m.

#### Spring Monroeville PSTC

- Class ID: 15996
- Starts: Wednesday, January 22 at 6 p.m.
- Monday & Wednesday, January 22, 27, 29, & February 3 & 5, 6-10 p.m., & Saturday, February 8, 8 a.m.-4 p.m.

#### Summer PSTC

- Class ID: 16627
- TIM & CPR not included in Summer Program, \$65.00 Tuition
- Starts: Tuesday, June 3 at 6 p.m.
- Tuesday & Thursday, June 3, 5, 10, & 12, 6-10 p.m.

#### Fall PSTC

- Class ID: 16628
- Starts: Tuesday, September 2 at 6 p.m.
- Tuesday & Thursday, September 2 & 4, 6-10 p.m., & Saturday & Sunday, September 6 & 7, 8 a.m.-4 p.m.

#### Fall Latrobe FD

- Class ID: 16664
- Starts: Wednesday, September 3 at 6 p.m.
- Monday & Wednesday, September 3 & 8, 6-10 p.m., & Saturday & Sunday, September 6 & 7, 8 a.m.-4 p.m.

To register, call 724.925.4000

## HAZMAT Awareness Level (HMAJB)

See Hazardous Materials Section for full course description & requirements. \$35 Tuition + \$5 Material Fee

### Spring PSTC

- Class ID: 16599
- Starts: Saturday, January 11 at 9 a.m.
- Saturday, January 11, 9 a.m.-3 p.m.
  - Sunday, January 12 - HMA Exam Prep (10-noon), Class ID: 16618
  - Sunday, January 12 - HMA Exam Available (noon-2 p.m.)

### Spring Latrobe

- **Class ID: 16600**
- Starts: Sunday, January 12 at 9 a.m.
- Sunday, January 12, 9 a.m.-3 p.m.

### Spring Monroeville PSTC

- Class ID: 16011
- Starts: Sunday, February 9, 9 a.m.-3 p.m.
- Sunday, February 9, 9 a.m.-3 p.m.

### Summer PSTC

- Class ID: 16601
- Starts: Tuesday, June 17 at 6 p.m.
- Tuesday & Thursday, June 17 & 19, 6 – 9 p.m.

### Fall PSTC

- Class ID: 16602
- Starts: Tuesday, September 9 at 6 p.m.
- Tuesday & Thursday, September 9 & 11, 6-10 p.m.
  - Sunday, September 21 - HMA Exam Prep (10-noon), Class ID: 16619
  - Sunday, September 21 - HMA Exam Available (noon-2 p.m.)

### Fall Latrobe FD

- Class ID: 16603
- Starts: Saturday, September 13 at 9 a.m.
- Saturday, September 13, 9 a.m.-3 p.m.



For more information about First Responder classes, contact Marc Jackson, director/Public Safety Training Center, 724.872.2447 or [jacksonmarc@westmoreland.edu](mailto:jacksonmarc@westmoreland.edu).

## Hazardous Materials Awareness (HMA)

### Pro Board / IFSAC Certification Exam

Completed Application is due at time of exam. Application and exam requirements available at PSFA website. \$75.00 Tuition + \$10.00 Material Fee

### Spring PSTC

- Class ID: 16618
- Sunday, January 12 - HMA Exam Prep (10-noon)
- Sunday, January 12 - HMA Exam Available (noon-2 p.m.)

### Fall PSTC

- Class ID: 16619
- Sunday, September 21 - HMA Exam Prep (10-noon)
- Sunday, September 21 - HMA Exam Available (noon-2 p.m.)

## Fireground Support (ELFG)

This entry level course is designed to introduce new firefighters to fire ground operation including fire behavior, building construction-structural collapse, fire hose, water supply, communications, ropes and knots, Self-Contained Breathing Apparatus (SCBA). This is the second of five levels (courses) in the curriculum. Upon successful completion an entry level firefighter shall be able to identify and utilize basic knowledge, skill, and abilities as they relate to fire ground operations. Student Equipment/Supply Needs: Pen/Pencil, Notebook suitable for classroom, Essentials of Fire Fighting, 6th Edition, TOG & SCBA. Prerequisite: Minimum age of 14+, ELIS, & current approved PSFA HMA or higher. \$135 Tuition

### Spring PSTC

- Class ID: 16630
- Starts: Tuesday, January 14 at 6 p.m.
- Tuesday & Thursday, January 14, 16, 21, & 23, 6-10 p.m., & Sunday, January 18 & 25, 8 a.m.-4:30 p.m.

### Spring Latrobe FD

- Class ID: 16665
- Starts: Monday, January 13 at 6 p.m.
- Monday & Wednesday, January 13, 15, 20, & 22, 6-10 p.m., & Sunday, January 19 & 26, 8 a.m.-4:30 p.m.

### Spring Monroeville PSTC

- Class ID: 15998
- Starts: Wednesday, February 12 at 6 p.m.
- Monday & Wednesday, February 12, 17, 19, & 24, 6-10 p.m., & Saturday, February 15 & 22, 9 a.m.-5 p.m.

### Summer PSTC

- Class ID: 16631
- Starts: Tuesday, June 24 at 6 p.m.
- Tuesday & Thursday, June 24, 26, & July 1, 3, 8, 10, 15, & 17, 6-10 p.m.

### Fall PSTC

- Class ID: 16632
- Starts: Tuesday, September 16 at 6 p.m.
- Tuesday & Thursday, September 16, 18, 23, & 25, 6-10 p.m., & Saturday & Sunday, September 27 & 28, 8 a.m.-4:30 p.m.

### Fall Latrobe FD

- Class ID: 16666
- Starts: Monday, September 15 at 6 p.m.
- Monday & Wednesday, September 15, 17, 22, & 24, 6-10 p.m., & Sunday, September 21 & 28, 8 a.m.-4:30 p.m.



### Exterior Firefighter (ELEF)

This entry level course is designed to introduce new firefighters to fire ground operation including Self-Contained Breathing Apparatus (SCBA), fire behavior, building construction, fire extinguishers, forcible entry, ladders, and fire streams/hose line advancement. This is the third of five levels (courses) in the curriculum. Upon successful completion an entry level firefighter shall be able to identify and utilize basic knowledge, skills, and abilities as they relate to exterior fire ground operations. Student Equipment/Supply Needs: Pen/Pencil, Notebook suitable for classroom, Essentials of Fire Fighting, 6th Edition & TOG, SCBA, & spare cylinder. Prerequisite: Minimum age of 16+, ELFG, NIMS 700, & ICS 100. \$185 Tuition + \$20 lab fee

#### Spring PSTC

- Class ID: 16633
- Starts: Tuesday, January 28 at 6 p.m.
- Tuesday & Thursday, January 28 & 30, & February 4, 6, 11, & 13, 6-10 p.m., & Saturday, February 1 & 8, 8 a.m.-4 p.m.

#### Spring Latrobe FD

- Class ID: 16667
- Starts: Monday, January 27 at 6 p.m.
- Monday & Wednesday, January 27 & 29, & February 3, 5, 10, & 12, 6-10 p.m., & Sunday, February 2 & 9, 8 a.m.-4 p.m.

#### Spring Monroeville PSTC

- Class ID: 15999
- Starts: Monday, March 3 at 6 p.m.
- Monday & Wednesday, March 3, 5, 10, 12, 17 & 19, 6-10 p.m., & Saturday, March 8 & 15, 9 a.m.-5 p.m.

#### Summer PSTC

- Class ID: 16634
- Starts: Tuesday, July 22 at 6 p.m.
- Tuesday & Thursday, July 22, 24, 29, & 31, & August 5, 7, 12, 14, 19, & 21, 6-10 p.m.

#### Fall PSTC

- Class ID: 16635
- Starts: Tuesday, September 30 at 6 p.m.
- Tuesday & Thursday, September 30, & October 2, 7, 9, 14, & 16, 6-10 p.m., & Saturday & Sunday, October 11 & 12, 8 a.m.-4:30 p.m.

#### Fall Latrobe FD

- Class ID: 16668
- Starts: Monday, September 29 at 6 p.m.
- Monday & Wednesday, September 29, & October 1, 6, 8, 13, & 15, 6-10 p.m., & Sunday, October 5 & 12, 8 a.m.-4:30 p.m.

### HAZMAT Operations Level (HMOJB)

See Hazardous Materials Section for full course description & requirements. \$125 Tuition + \$10 lab fee

#### Spring PSTC

- Class ID: 16620
- Starts: Tuesday, February 18 at 6 p.m.
- Tuesday & Thursday, February 18, 20, 25, & 27, 6-10 p.m., & Saturday, February 22 & March 1, 8 a.m.-4 p.m.

#### Spring Latrobe FD

- At PSTC and is the Spring PSTC program, Class ID: 16620

#### Monroeville PSTC

- Class ID: 16012
- Starts: Monday, March 24 at 6 p.m.
- Monday & Wednesday, March 24, 26, 31, & April 2, 6-10 p.m., & Saturday & Sunday, April 5 & 6, 9 a.m.-5 p.m.

#### Fall PSTC

- Class ID: 16621
- Starts: Saturday, October 18 at 8 a.m.
- Monday, Tuesday, Wednesday, & Thursday, October 20, 21, 22, & 23, 6-10 p.m., & Saturday & Sunday, October 18 & 19, 8 a.m.-4 p.m.

#### Fall Latrobe FD

- At PSTC and is the Fall PSTC program, Class ID: 16621





### Interior Firefighter (ELIF)

The final class for entry level firefighters is for those persons that want to do live, interior fire suppression with SCBA. Self-contained breathing apparatus, nozzles and fire streams, rescue, ventilation, fire suppression, salvage and overhaul, firefighter survival and a live fire exercise are included. Satisfactory completion of a written exam required to receive a certificate. Student Equipment/Supply Needs: Pen/Pencil, Notebook suitable for classroom, Essentials of Fire Fighting, 6th Edition, TOG, SCBA, & spare cylinder. Prerequisite: Minimum age of 18+, ELEF, & current PSFA approved HMO/R. \$300 Tuition + \$30 lab fee

#### Spring PSTC

- Class ID: 16636
- Starts: Tuesday, March 4 at 6 p.m.
- Tuesday & Thursdays, March 4, 6, 11, 13, 18, 20, & 27 6-10 p.m., & Saturday, March 8, 15, 22, & 29, 8 a.m.-4 p.m.

#### Latrobe FD

- Class ID: 16669
- Starts: Monday, March 3 at 6 p.m.
- Monday, Tuesday, Wednesday, & Thursday March 3, 5, 10, 13, 18, 19, & 27 6-10 p.m., & Saturday & Sunday, March 9, 16, 23, & 29, 8 a.m.-4 p.m. At a minimum - Tuesday, Thursday, & Saturday, March 13, 18, 27, & 29 at PSTC.

#### Spring Monroeville Center

- Class ID: 16024
- Starts: Wednesday, April 9 at 6 p.m.
- Monday & Wednesday, April 9, 14, 16, 21, 23, 28, & 30, 6-10 p.m., & Saturday, April 12, 19, 26, & May 3, 9 a.m.-4 p.m.

#### Fall PSTC

- Class ID: 16637
- Starts: Saturday, October 25 at 8 a.m.
- Tuesday & Thursday, October 28 & 30, & November 4, 11, & 13, 6-10 p.m., & Saturday & Sunday, October 25 & 26, November 8, 9, & 15, 8 a.m.-4 p.m.

#### Fall Latrobe FD

- Class ID: 16670
- Starts: Sunday, October 26 at 8 a.m.
- Tuesday & Thursday, October 28, & November 4 & 13, 6-10 p.m., & Saturday & Sunday, October 26, November 1, 2, 8, 9 & 15, 8 a.m.-4 p.m. At a minimum - Tuesday, Thursday, & Sunday, October 28, November 4, 13, & 15 at PSTC.

**For more information about First Responder classes, contact Marc Jackson, director/Public Safety Training Center, 724.872.2447 or [jacksonmarc@westmoreland.edu](mailto:jacksonmarc@westmoreland.edu).**

### Firefighter I Preparation (Westmoreland Exclusive)

See Certification Preparation Section for full course description & requirements. Minimum class size is ten (10) and maximum class size is thirty (30). \$150 Tuition + \$25 lab fee

#### Spring PSTC

- Class ID: 16638
- Starts: Tuesday, April 1 at 6 p.m.
- Tuesday & Thursday, April 1, 3, 8, 10, 15, & 17, 6-10 p.m., & Saturday, April 5, 8 a.m.-4 p.m.
- First Aid & CPR for Vehicle Rescue & FF-I Prep Series (if needed)
  - \$35 Tuition + \$30 lab fee.
  - Class ID: 16675
  - Starts: Monday, April 14 at 6 p.m.
  - Tuesday, April 14, 6-10 p.m.
- Spring Firefighter I Exam:
  - Exam is limited to 60 candidates, and PSTC prep program students have first spots.
  - Exam Scheduled for Friday & Saturday, April 26 & 27; Written Exam: Friday, April 26 with report time of 6:30 p.m., Skills Exam: Saturday, April 27 with report time of 7:30 a.m.
  - Registration/Spot for exam by submitting properly completed application to the PSTC by Friday, April 11 by 4 p.m.
  - Application available at: <https://www.pa.gov/en/services/osfc/get-certified-firefighter-1.html>

#### Fall PSTC

- Class ID: 16639
- Starts: Tuesday, November 18 at 6 p.m.
- Tuesday & Thursday, November 18, 20, & 25, & December 2, 4, 9, 6-10 p.m., & Saturday, November 22, 8 a.m.-4 p.m.
- First Aid/CPR/AED - 2025 Fall FF-I Prep (if needed)
  - \$35 Tuition + \$30 lab fee.
  - Class ID: 16676
  - Starts: Wednesday, November 26 at 6 p.m.
  - Wednesday, November 26, 6-10 p.m.
- Fall Firefighter I Exam
  - Exam is limited to 60 candidates, and PSTC prep program students have first spots.
  - Exam Scheduled for Friday & Saturday, December 12 & 13; Written Exam: Friday, December 13 with report time of 6:30 p.m., Skills Exam: Saturday, December 14 with report time of 7:30 a.m.
  - Registration/Spot for exam by submitting properly completed application to the PSTC by Tuesday, November 25 by 6 p.m.
  - Application available at: <https://www.pa.gov/en/services/osfc/get-certified-firefighter-1.html>





## PENNSYLVANIA ADVANCED FIREFIGHTING SERIES

### 2024 New Vehicle Rescue Series Requirements:

#### 1. 2024 Version NFPA 1670 - Vehicle Rescue Awareness (NVRA 2024) – 2025 Spring PSTC

- Prerequisite(s): Participants entering the program MUST be at least 16 years of age by the first day of class, have completed the FEMA's NIMS 100 & 700, a HAZMAT Awareness course, and at least four hours of training in a recognized Traffic Incident Management (TIM) course.

#### 2. 2024 Version NFPA 1670 - Vehicle Rescue Operations (NVRO 2024) – 2025 Spring PSTC

- Prerequisite(s): Participants entering the program MUST be at least 16 years of age by the first day of class; completed the PA State Fire Academy/Department of Health NFPA 1006 Passenger Vehicle Rescue Awareness 24 course, possess a current approved first aid certification or current EMS Provider certification and possess current approved CPR certification and possess a Hazardous Materials Operations training or national certification.

#### 3. 2024 Version NFPA 1670 - Vehicle Rescue Technician (NVRT 2024) – 2025 Spring PSTC

- Prerequisite(s): Participants entering the program MUST be at least 16 years of age by the first day of class; completed the PA State Fire Academy/Department of Health NFPA 1006 Passenger Vehicle Rescue Operations 24 course, possess a current approved first aid certification or current EMS Provider certification and possess current approved CPR certification and possess a Hazardous Materials Operations training or national certification

### Spring 2025 Series

#### Traffic Incident Management (TIM) (if needed)

Prerequisites: Minimum age: 14 years old at start of course.  
Student Equipment & Supplies: Pen/Pencil, Notebook, & traffic vest. Course is a PSFA CEU program. Total hours = 4, CEUs = 0.4.  
\$35 Tuition + \$10 lab fee

#### Spring PSTC

- Class ID: 16673
- Starts: Sunday, April 6 at 8 a.m.
- Sunday, April 6, 8 a.m.-noon
  - Optional: Traffic Incident Management Personnel Certification Exam
- Sunday, April 6, 12:30-4:30 p.m.
- Tuition: \$150.00
- Application at: <https://www.pa.gov/services/osfc/get-certified-traffic-incident-management-personnel.html?appId=aemshell>
- Application Due: Friday, March 28 at the PSTC by 4 p.m.

#### 2024 Version NFPA 1670 - Vehicle Rescue Awareness (NVRA 2024) – 2025 Spring PSTC

- Class ID: 16646
- \$100 Tuition + \$70 lab fee
- Starts: Tuesday, April 8 at 6 p.m.
- Tuesday & Thursday, April 8 & 10, 6-10 p.m., & Saturday, April 12, 8 a.m.-4 p.m.

#### HAZMAT Operations Level Refresher (HMORJB) (if needed)

See Hazardous Materials Section for full course description & requirements. \$45 Tuition + \$10 lab fee

#### Spring PSTC

- Class ID: 16624
- Starts: Sunday, April 13 at 9 a.m.
- Saturday, April 13, 9 a.m.-3 p.m.

### First Aid & CPR for Vehicle Rescue Series (if needed)

\$35 Tuition + \$30 lab fee.

#### Spring PSTC

- Class ID: 16675
- Starts: Monday, April 14 at 6 p.m.
- Tuesday, April 14, 6-10 p.m.

### 2024 Version NFPA 1670 - Vehicle Rescue Operations (NVRO 2024) – 2025 Spring PSTC

- Class ID: 16648
- \$195 Tuition + \$70 lab fee
- Starts: Tuesday, April 22 at 6 p.m.
- Tuesday & Thursday, April 22 & 24, 6-10 p.m., & Saturday & Sunday, April 26 & 28, 8 a.m.-4 p.m., & Saturday, May 3, 8 a.m.- noon.

### 2024 Version NFPA 1670 - Vehicle Rescue Technician (NVRT 2024) – 2025 Spring PSTC

- Class ID: 16650
- \$175 Tuition + \$70 lab fee
- Starts: Saturday, May 17 at 8 a.m.
- Saturday & Sunday, May 17 & 18, 8 a.m.-4 p.m.

### Firefighter II Skills Preparation (Westmoreland Exclusive)

See Certification Preparation Section for full course description & requirements. Minimum class size is ten (10) and maximum class size is thirty (30). \$115 Tuition + \$15 lab fee.

#### Spring PSTC

- Class ID: 16644
- Starts: Wednesday, March 19 at 6 p.m. (Application Package Night)
- Monday & Wednesday, March 19, 26, & April 2, 9, & 16, 6-10 p.m.
  - Exam Scheduled for Friday & Saturday, April 25 & 26; Written Exam: Friday, April 25 with report time of 6:30 p.m., Skills Exam: Saturday, April 26 with report time of 7:30 a.m.
- Registration/Spot for exam by submitting properly completed application to the PSTC by Friday, April 11 by 4 p.m.
- Application available at: <https://www.pa.gov/en/services/osfc/get-certified-firefighter-2.html>



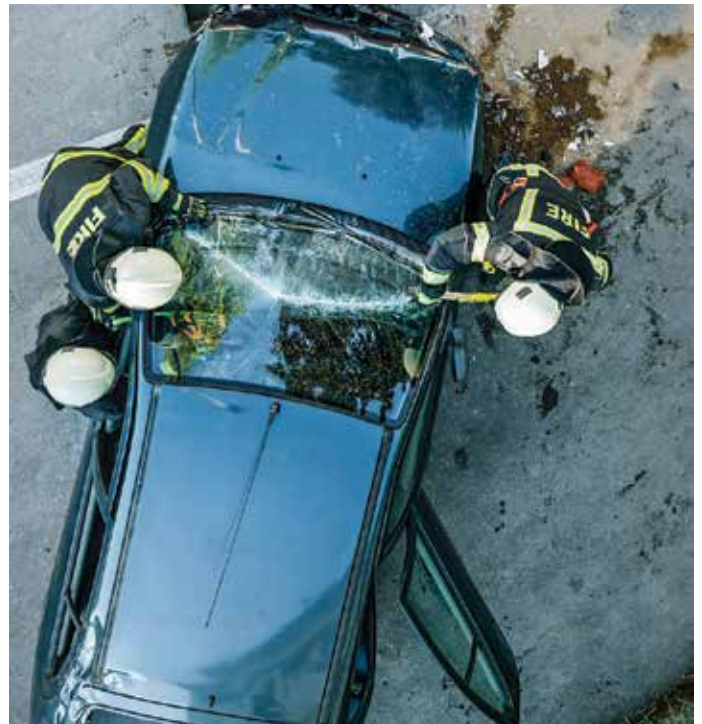
### Fall 2025 Vehicle Rescue Series

#### Traffic Incident Management (TIM) (if needed)

Prerequisites: Minimum age: 14 years old at start of course. Student Equipment & Supplies: Pen/Pencil, Notebook, & traffic vest. Course is a PSFA CEU program. Total hours = 4, CEUs = 0.4. \$35 Tuition + \$10 lab fee

#### Fall PSTC

- Class ID: 16674
- Starts: Sunday, September 28 at 8 a.m.
- Sunday, September 28, 8 a.m.-noon
  - Optional: Traffic Incident Management Personnel Certification Exam
- Sunday, September 28, 12:30-5 p.m.
- Tuition: \$150.00
- Application at: <https://www.pa.gov/services/osfc/get-certified-traffic-incident-management-personnel.html?appld=aemshell>
- Application Due: Friday, September 19 at the PSTC by 4 p.m.



### 2024 Version NFPA 1670 - Vehicle Rescue Awareness (NVRA 2024)

- Class ID: 16647
- \$100 Tuition + \$70 lab fee
- Starts: Tuesday, October 7 at 6 p.m.
- Tuesday & Thursday, October 7 & 9, 6-10 p.m. & Sunday, October 12, 8 a.m.-4 p.m.

### HAZMAT Operations Level Refresher (HMORJB) (if needed)

See Hazardous Materials Section for full course description & requirements. \$45 Tuition + \$10 lab fee

#### Fall PSTC

- Class ID: 16625
- Starts: Saturday, October 11 at 9 a.m.
- Saturday, October 11, 9 a.m.-3 p.m.



### First Aid & CPR for Vehicle Rescue Series (if needed)

\$35 Tuition + \$30 lab fee.

#### Fall PSTC

- Class ID: 16676
- Starts: Monday, October 13 at 6 p.m.
- Monday, October 13, 6-10 p.m.

### 2024 Version NFPA 1670 - Vehicle Rescue Operations (NVRO 2024)

- Class ID: 16649
- \$195 Tuition + \$70 lab fee
- Starts: Tuesday, October 14 at 6 p.m.
- Tuesday & Thursday, October 14 & 16, 6-10 p.m., & Saturday & Sunday, October 18 & 19, 8 a.m.-4 p.m., & Sunday, October 26, 8 a.m.-Noon.

### 2024 Version NFPA 1670 - Vehicle Rescue Technician (NVRT 2024)

- Class ID: 16651
- \$175 Tuition + \$70 lab fee
- Starts: Saturday, November 8 at 8 a.m.
- Saturday & Sunday, November 8 & 9, 8 a.m.-4 p.m.

### Firefighter II Skills Preparation (Westmoreland Exclusive)

See Certification Preparation Section for full course description & requirements. Minimum class size is ten (10) and maximum class size is thirty (30). \$115 Tuition + \$15 lab fee.

#### Fall PSTC

- Class ID: 16645
- Starts: Wednesday, October 1 at 6 p.m. (Application Package Night)
- Wednesdays, November 19, 26, & December 3, 10, 6-10 p.m.
  - Exam Scheduled for Friday & Saturday, December 12 & 13; Written Exam: Friday, December 12 with report time of 6:30 p.m., Skills Exam: Saturday, December 13 with report time of 7:30 a.m.
  - Registration/Spot for exam by submitting properly completed application to the PSTC by Friday, December 5 by 4 p.m.
  - Application available at: <https://www.pa.gov/en/services/osfc/get-certified-firefighter-2.html>

**For more information about First Responder classes, contact Marc Jackson, director/Public Safety Training Center, 724.872.2447 or [jacksonmarc@westmoreland.edu](mailto:jacksonmarc@westmoreland.edu).**

## RESCUE PROGRAMS

### Water Rescue:

#### Water Rescue for the First Responder Awareness Level – NFPA 1670 Awareness Level

Prerequisites: Minimum age: 14 years old at start of course. Student Equipment & Supplies: Pen/Pencil, Notebook. Course is a PSFA CEU program. Total hours = 4, CEUs = 0.4. \$35 Tuition

#### Spring PSTC

- Class ID: 16654
- Starts: Wednesday, February 26 at 6 p.m.
- Wednesday, February 26, 6-10 p.m.



### Spring Vehicle Rescue:

#### 2024 New Vehicle Rescue Series Requirements:

##### 1. 2024 Version NFPA 1670 - Vehicle Rescue Awareness (NVRA 2024) – 2025 Spring PSTC

- Prerequisite(s): Participants entering the program MUST be at least 16 years of age by the first day of class, have completed the FEMA's NIMS 100 & 700, a HAZMAT Awareness course, and at least four hours of training in a recognized Traffic Incident Management (TIM) course.

##### 2. 2024 Version NFPA 1670 - Vehicle Rescue Operations (NVRO 2024) – 2025 Spring PSTC

- Prerequisite(s): Participants entering the program MUST be at least 16 years of age by the first day of class; completed the PA State Fire Academy/Department of Health NFPA 1006 Passenger Vehicle Rescue Awareness 24 course, possess a current approved first aid certification or current EMS Provider certification and possess current approved CPR certification and possess a Hazardous Materials Operations training or national certification.

##### 3. 2024 Version NFPA 1670 - Vehicle Rescue Technician (NVRT 2024) – 2025 Spring PSTC

- Prerequisite(s): Participants entering the program MUST be at least 16 years of age by the first day of class; completed the PA State Fire Academy/Department of Health NFPA 1006 Passenger Vehicle Rescue Operations 24 course. possess a current approved first aid certification or current EMS Provider certification and possess current approved CPR certification and possess a Hazardous Materials Operations training or national certification

**To register, call 724.925.4000**

### 2024 Version NFPA 1670 - Vehicle Rescue Awareness (NVRA 2024) – 2025 Spring PSTC

- Class ID: 16646
- \$100 Tuition + \$70 lab fee
- Starts: Tuesday, April 8 at 6 p.m.
- Tuesday & Thursday, April 8 & 10, 6-10 p.m., & Saturday, April 12, 8 a.m.-4 p.m.

### 2024 Version NFPA 1670 - Vehicle Rescue Operations (NVRO 2024) – 2025 Spring PSTC

- Class ID: 16648
- \$195 Tuition + \$70 lab fee
- Starts: Tuesday, April 22 at 6 p.m.
- Tuesday & Thursday, April 22 & 24, 6-10 p.m., & Saturday & Sunday, April 26 & 28, 8 a.m.-4 p.m., & Saturday, May 3, 8 a.m.- noon.



### 2024 Version NFPA 1670 - Vehicle Rescue Technician (NVRT 2024) – 2025 Spring PSTC

- Class ID: 16650
- \$175 Tuition + \$70 lab fee
- Starts: Saturday, May 17 at 8 a.m.
- Saturday & Sunday, May 17 & 18, 8 a.m.-4 p.m.

### Spring 2025 NFPA 1670 – Vehicle Rescue Technician Pro Board / IFSAC Certification Exam

- Exam is limited to 24 candidates, and PSTC students have first spots.
- Saturday & Sunday, June 6 & 7, 8 a.m. - ?
- Report Time: 07:30 a.m.
- This will be a pilot exam for the PSFA NFPA 1670 – Vehicle Rescue Technician Pro Board / IFSAC Certification Exam.
- Tuition: \$300.00 (estimated, may be lower or higher, details have not been provided by the PSFA at the time of this announcement)
- Those individuals who obtain professional certification, as a Vehicle Rescue Technician level, in conjunction with the Technician level program through PVRT24, may apply to receive Pennsylvania Department of Health certification as a Vehicle Rescue Technician.

### Special Vehicle Rescue (DOH) (DHSV) Extended

Prerequisites: Minimum age: 18 years old at start of course and NVRO or DHVR or BVRT or BVRC. Student Equipment & Supplies: Pen/Pencil, Notebook; and PPE. Course is a PSFA CEU program. Total hours = 24, CEUs = 2.4. \$125 Tuition + \$50 lab fee  
Summer PSTC

- Class ID: 16655
- Starts: Tuesday, June 17, Report Time of 6 p.m.
- Tuesday & Thursday, June 17 & 19, 6-10 p.m., & Saturday & Sunday, June 21 & 22, 8 a.m.-4 p.m.

**For more information about First Responder classes, contact Marc Jackson, director/Public Safety Training Center, 724.872.2447 or [jacksonmarc@westmoreland.edu](mailto:jacksonmarc@westmoreland.edu).**

### Fall 2024 Vehicle Rescue Series:

#### 2024 New Vehicle Rescue Series Requirements:

##### 1. 2024 Version NFPA 1670 - Vehicle Rescue Awareness (NVRA 2024) – 2025 Spring PSTC

- Prerequisite(s): Participants entering the program MUST be at least 16 years of age by the first day of class, have completed the FEMA's NIMS 100 & 700, a HAZMAT Awareness course, and at least four hours of training in a recognized Traffic Incident Management (TIM) course.

##### 2. 2024 Version NFPA 1670 - Vehicle Rescue Operations (NVRO 2024) – 2025 Spring PSTC

- Prerequisite(s): Participants entering the program MUST be at least 16 years of age by the first day of class; completed the PA State Fire Academy/Department of Health NFPA 1006 Passenger Vehicle Rescue Awareness 24 course, possess a current approved first aid certification or current EMS Provider certification and possess current approved CPR certification and possess a Hazardous Materials Operations training or national certification.

##### 3. 2024 Version NFPA 1670 - Vehicle Rescue Technician (NVRT 2024) – 2025 Spring PSTC

- Prerequisite(s): Participants entering the program MUST be at least 16 years of age by the first day of class; completed the PA State Fire Academy/Department of Health NFPA 1006 Passenger Vehicle Rescue Operations 24 course. possess a current approved first aid certification or current EMS Provider certification and possess current approved CPR certification and possess a Hazardous Materials Operations training or national certification



### 2024 Version NFPA 1670 - Vehicle Rescue Awareness (NVRA 2024)

- Class ID: 16647
- \$100 Tuition + \$70 lab fee
- Starts: Tuesday, October 7 at 6 p.m.
- Tuesday & Thursday, October 7 & 9, 6-10 p.m. & Sunday, October 12, 8 a.m.-4 p.m.



### 2024 Version NFPA 1670 - Vehicle Rescue Operations (NVRO 2024)

- Class ID: 16649
- \$195 Tuition + \$70 lab fee
- Starts: Tuesday, October 14 at 6 p.m.
- Tuesday & Thursday, October 14 & 16, 6-10 p.m., & Saturday & Sunday, October 18 & 19, 8 a.m.-4 p.m., & Sunday, October 26, 8 a.m.-Noon.

### 2024 Version NFPA 1670 - Vehicle Rescue Technician (NVRT 2024)

- Class ID: 16651
- \$175 Tuition + \$70 lab fee
- Starts: Saturday, November 8 at 8 a.m.
- Saturday & Sunday, November 8 & 9, 8 a.m.-4 p.m.

### Fall 2025 NFPA 1670 – Vehicle Rescue Technician Pro Board / IFSAC Certification Exam

- Exam is limited to 24 candidates, and PSTC prep program students have first spots.
- Saturday & Sunday, December 6 & 7, 8 a.m. - ?
- Report Time: 07:30 a.m.
- This will be a pilot exam for the PSFA NFPA 1670 – Vehicle Rescue Technician Pro Board / IFSAC Certification Exam.
- Tuition: \$300.00 (estimated, may be lower or higher, details have not been provided by the PSFA at the time of this announcement)
- Those individuals who obtain professional certification, as a Vehicle Rescue Technician level, in conjunction with the Technician level program through PVRT24, may apply to receive Pennsylvania Department of Health certification as a Vehicle Rescue Technician.

For more information about First Responder classes, contact Marc Jackson, director/Public Safety Training Center, 724.872.2447 or [jacksonmarc@westmoreland.edu](mailto:jacksonmarc@westmoreland.edu).

## Technical Rescue:

### Structure Collapse I (SCOA)

Student Equipment/Supply Needs: Pen/Pencil, Notebook suitable for classroom. Prerequisite: Minimum age of 14+, & ELIS. Minimum class size is ten (10) and maximum class size is twenty-four (24). \$35 Tuition

#### Spring PSTC

- Class ID: 16656
- Starts: Tuesday, April 22 at 6 p.m.
- Tuesday, April 22, 6-10 p.m.

### Structure Collapse II (SCOF)

Student Equipment/Supply Needs: Pen/Pencil, Notebook suitable for classroom, & PPE. Prerequisite: Minimum age of 18+, & PSFA Confined Space Rescue (CSR) or Building Construction: Non-Combustible & Fire Resistant (BCN) or Building Construction: Wood and Ordinary (BCP) & SCOA. Minimum class size is ten (10) and maximum class size is twenty-four (24). \$95 Tuition + \$75 lab fee

#### Spring PSTC

- Class ID: 16657
- Starts: Saturday May 31 at 8 a.m.
- Saturday & Sunday, May 31 & June 1, 8 a.m.-4 p.m.

### Trench Rescue Operations (TRRE)

Student Equipment/Supply Needs: Pen/Pencil, Notebook suitable for classroom, & PPE. Prerequisite: Minimum age of 18+, & ELIS or ITS or equivalent discipline-specific training in occupational safety. Minimum class size is ten (10) and maximum class size is twenty-four (24). \$100 Tuition + \$50 lab fee.

#### Spring PSTC

- Class ID: 16658
- Starts: Saturday August 16 at 8 a.m.
- Saturday & Sunday, August 16 & 17, 8 a.m.-4 p.m.

## Roper Rescue:

### Basic Rigging for Rope Rescue (ROBR)

Prerequisites: Minimum age: 14 years old at start of course, and ELIS. Student Equipment/Supply Needs: Notebook, pen or pencil, helmet with chin strap, clean leather gloves and work or hiking type boots. Students will also need a 15-foot section of rope and 15-foot piece of 1-inch tubular webbing for knot practice. Turnout gear is not acceptable. Students may supply additional personal or department owned equipment, but all such equipment is subject to inspection and/or rejection by the instructors prior to use. Course is a PSFA CEU program. Total hours = 16, CEUs = 1.6. \$85 Tuition + \$25 lab fee

#### Spring PSTC

- Class ID: 16659
- Starts: Tuesday, April 15 at 6 p.m.
- Tuesday & Thursday, April 15, 17, 22, & 23, 6-10 p.m.



To register, call 724.925.4000

17

**WESTMORELAND**  
COUNTY  
**COLLEGE**

PUBLIC SAFETY TRAINING CENTER

## PRO BOARD / IFSAC PREPARATION

### Hazardous Materials Awareness (HMA) Pro Board / IFSAC Certification Prep and Exam

Completed Application is due at time of exam. Application and exam requirements available at PSFA website. \$75.00 Tuition/ Material Fee (PSFA Exam fee) Prerequisite: Minimum age of 14+, completed application with current PSFA approved HMA or higher certificate of training. Application available at: <https://www.pa.gov/en/services/osfc/get-certified-hazardous-materials-awareness.html?appld=aemshell>

#### Spring PSTC

- Class ID: 16618
- Sunday, January 12 - HMA Exam Prep (10-noon)
- Sunday, January 12 - HMA Exam Available (noon-2 p.m.)

#### Fall PSTC

- Class ID: 16619
- Sunday, September 21 - HMA Exam Prep (10-noon)
- Sunday, September 21 - HMA Exam Available (noon-2 p.m.)

### Driver/Operator – Pumper Skills Preparation

Student Equipment/Supply Needs: Pen/Pencil, Notebook suitable for classroom and field use, fire fighter protective clothing (day of skills), and proper arrangements for apparatus usage with their department or associate student departments (Apparatus is not required the first day of class). Prerequisite: PUOP & minimum age of 18+. Minimum class size is six (6) and maximum class size is twenty-four (24). \$65 Tuition + \$10 material fee

#### Spring PSTC

- Class ID: 16545
- Starts: Thursday, May 6 at 6 p.m.
- Tuesday & Thursday, May 6, 8, & 13, 6-10 p.m.

#### Fall PSTC

- Class ID: 16546
- Starts: Tuesday, October 28 at 6 p.m.
- Tuesday & Thursday, October 28, 30, & November 4, 6-10 p.m.

### Driver/Operator - Aerial Apparatus Preparation

Student Equipment/Supply Needs: Pen/Pencil, Notebook suitable for classroom and field use, fire fighter protective clothing (day of skills), and proper arrangements for apparatus usage with their department or associate student departments (Apparatus is not required the first day of class). Prerequisite: Minimum age of 18+, & Firefighter I Certification. \$65 Tuition + \$10 material fee

#### Spring PSTC

- Class ID: 16548
- Starts: Thursday, May 1 at 6 p.m.
- Tuesday & Thursday, May 1, 6, & 8, 6-10 p.m.



### UPDATED PROGRAM: Driver/Operator – Mobile Water Supply Skills Preparation with Rural Water Movement Review

Student Equipment/Supply Needs: Pen/Pencil, Notebook suitable for classroom and field use, fire fighter protective clothing (day of skills), and proper arrangements for apparatus usage with their department or associate student departments (Apparatus is not required the first day of class). Prerequisite: ELIS or IST & minimum age of 18+. Minimum class size is six (6) and maximum class size is twenty-four (24). \$85 Tuition + \$10 material fee

#### Spring PSTC

- Class ID: 16549
- Starts: Wednesday, April 30 at 6 p.m.
- Wednesdays, April 30, & May 7, 14, & 21, 6-10 p.m.

### Hazardous Materials Operations (HMO) Pro Board / IFSAC Certification Exam Prep

Student Equipment/Supply Needs: Pen/Pencil, Notebook suitable for classroom, TOG, SCBA, & spare cylinder. Prerequisite: Minimum age of 16+, current HMO or R certificate of completion and HMA Pro Board Certification. \$75.00 Tuition + \$10.00 Material Fee

#### Spring PSTC

- Class ID: 16622
- Starts: Sunday, May 4 at 8 a.m.
- Sunday, May 4, 8 a.m.-4 p.m.

#### Fall PSTC

- Class ID: 16623
- Starts: Sunday, November 16 at 8 a.m.
- Sunday, November 16, 8 a.m.-4 p.m.

### Firefighter I Preparation (Westmoreland Exclusive)

See Certification Preparation Section for full course description & requirements. Minimum class size is ten (10) and maximum class size is thirty (30). \$150 Tuition + \$25 lab fee

#### Spring PSTC

- Class ID: 16638
- Starts: Tuesday, April 1 at 6 p.m.
- Tuesday & Thursday, April 1, 3, 8, 10, 15, & 17, 6-10 p.m., & Saturday, April 5, 8 a.m.-4 p.m.

#### Fall PSTC

- Class ID: 16639
- Starts: Tuesday, November 18 at 6 p.m.
- Tuesday & Thursday, November 18, 20, & 25, & December 2, 4, 9, 6-10 p.m., & Saturday, November 22, 8 a.m.-4 p.m.

**For more information about First Responder classes, contact Marc Jackson, director/Public Safety Training Center, 724.872.2447 or [jacksonmarc@westmoreland.edu](mailto:jacksonmarc@westmoreland.edu).**



### Firefighter II Skills Preparation (Westmoreland Exclusive)

Student Equipment/Supply Needs: Pen/Pencil, Notebook suitable for classroom, & TOG/SCBA (not needed first night of class). Prerequisite: Minimum age of 18+, & Firefighter I certification, all additional requirements for FF II exam per PSFA Certification Department. Minimum class size is ten (10) and maximum class size is thirty (30). \$115 Tuition + \$15 lab fee.

#### Spring PSTC

- Class ID: 16644
- Starts: Wednesday, March 19 at 6 p.m. (Application Package Night)
- Monday & Wednesday, March 19, 26, & April 2, 9, & 16, 6-10 p.m.

#### Fall PSTC

- Class ID: 16645
- Starts: Wednesday, October 1 at 6 p.m. (Application Package Night)
- Wednesdays, November 19, 26, & December 3, 10, 6-10 p.m.

## CERTIFICATION TESTING

Professional Certification Program(s) are designed to recognize emergency service personnel that have demonstrated proficiency and an ability to do the job in accordance with nationally recognized peer-developed standards via the NFPA standards for Fire Service Professional Qualifications. An individual certified to one of the many levels offered will have demonstrated competency in the knowledge and skills required to perform at a particular fire service professional qualification level. Obtaining a certification will augment the professional competency of you and your department.

Please note application deadlines! Your completed application with required certificates of training AND payment must be received no later than 4 p.m. per the deadline dates to be considered! All prices for certification are based on required candidate to evaluator ratios. Additional costs may be applied based on number of candidates testing. Check should be written out to WCCC, with type of exam and your name in the memo. Application and payment MUST be sent to:

Marc Jackson, PSTC Director  
65 Public Safety Drive  
Smithton, PA 15479

**NO EMAILED APPLICATIONS WILL BE  
ACCEPTED FOR HOLDING EXAM SPOT**



### Certification Retesting Policy

- Skills retesting for any PSFA Certification Exam during initial skills testing is NOT GUARANTEED nor REQUIRED and is subject to multiple conditions, to include, but not limited to: PSFA certification policy, weather, number of retests, and associated time related to associated retests. Typically, no retesting of skills is permitted after 4:30 p.m., but subject to review at the time of exam.
- Written Retests can be scheduled at the PSTC based on both candidate and Test Site Coordinators availability.
- Skill Retesting can be rescheduled when a regular skills exam is scheduled to run, and is subject to evaluators associated with scheduled exam being qualified to retest said skills and candidate size of scheduled exam.
- Private skills retest can be scheduled for a \$250.00, but is subject to site availability and required staffing. Associated fee is to cover cost of staff required per PSFA.

**To register, call 724.925.4000**

## Pennsylvania State Fire Academy (PSFA) Professional Certification Programs:

- Are both National Board on Fire Service Professional Qualifications (Pro Board) and the International Fire Service Accreditation Congress (IFSAC)

### Driver/Operator – Pumper Certification

Exam is limited to 20 candidates, and PSTC prep program students have first spots.

\$200 Tuition

Registration/Spot for exam by submitting properly completed application to the PSTC by posted deadline. Application and exam requirements available at: <https://www.pa.gov/en/services/osfc/get-certified-driver-operator-pumper.html>

#### Spring PSTC

- Class ID: N/A
- Start: Saturday, May 31, Report Time of 7:30 a.m.
- Saturday, May 31, 8 a.m.-5 p.m.
- Registration Deadline is Friday, May 16 by 4 p.m. at the PSTC.

#### Fall PSTC

- Class ID: N/A
- Start: Saturday, November 8, Report Time of 7:30 a.m.
- Saturday, November 8, 8 a.m.-5 p.m.
- Application Deadline is Friday, October 31 by 4 p.m. at the PSTC.



### Driver/Operator – Aerial Certification

Exam is limited to 20 candidates, and PSTC prep program students have first spots.

\$200.00 Tuition

Registration/Spot for exam by submitting properly completed application to the PSTC by posted deadline. Application and exam requirements available at: <https://www.osfc.pa.gov/State%20Fire%20Academy/Certification/Certification%20Levels%20Presently%20Offered/Pages/Driver-Operator-Aerial.aspx>

- Candidate is responsible for proper arrangements for apparatus usage with their department or associate candidate departments; signed letter from associate candidate department permitting use of apparatus is required.

#### Spring PSTC

- Class ID: N/A
- Starts: Sunday, May 31, Report Time of 7:30 a.m.
- Sunday, May 31, 8 a.m.-5 p.m.
- Application Deadline is Friday, May 16 by 4 p.m. at the PSTC.

### Driver/Operator – Mobile Water Supply Certification Exam

Exam is limited to 20 candidates, and PSTC prep program students have first spots.

\$200.00 Tuition

Registration/Spot for exam by submitting properly completed application to the PSTC by posted deadline. Application and exam requirements available at: <https://www.pa.gov/en/services/osfc/get-certified-driver-operator-mobile-water-supply.html?appld=aemshell>

- Candidate is responsible for proper arrangements for apparatus usage with their department or associate candidate departments; signed letter from associate candidate department permitting use of apparatus is required.

#### Spring PSTC

- Class ID: N/A
- Start: Saturday, May 31, Report Time of 7:30 a.m.
- Saturday, May 31, 8 a.m.-5 p.m.
- Registration Deadline is Friday, May 16 by 4 p.m. at the PSTC.



### Fire Officer I Certification Exam

PLEASE NOTE PREREQUESTS ARE DIFFERENT FROM CLASS:

Prerequisite: NIMS, Haz. Mat. Ops., Firefighter II and Fire Service Instructor I, & minimum age of 18+. \$200 Tuition. Application and exam requirements available at: <https://www.pa.gov/en/services/osfc/get-certified-fire-officer-1.html>

#### Spring PSTC

- Class ID: N/A
- Starts: Sunday, March 2, Report Time of 7:30 a.m.
- Sunday, March 2, 8 a.m.-5 p.m.
- Application Deadline is Friday, February 28 by 4 p.m.

### Instructor I Pro Board / IFSAC Written & Skills Exam

Application and exam requirements will be provided in class.

\$200 Tuition

#### Spring PSTC

- Class ID: N/A
- Starts: Sunday, April 13 Report Time 7:30 a.m.
- Sunday, April 13, 8 a.m.-5 p.m.
- Application Deadline is Friday, April 4

## Hazardous Materials Awareness (HMA) Pro Board / IFSAC Certification Prep and Exam

Completed Application is due at time of exam. Application and exam requirements available at PSFA website. \$75.00 Tuition/ Material Fee (PSFA Exam fee) Prerequisite: Minimum age of 14+, completed application with current PSFA approved HMA or higher certificate of training. Application available at: <https://www.pa.gov/en/services/osfc/get-certified-hazardous-materials-awareness.html?appld=aemshell>

### Spring PSTC

- Class ID: 16618
- Sunday, January 12 - HMA Exam Prep (10-noon)
- Sunday, January 12 - HMA Exam Available (noon-2 p.m.)

### Fall PSTC

- Class ID: 16619
- Sunday, September 21 - HMA Exam Prep (10-noon)
- Sunday, September 21 - HMA Exam Available (noon-2 p.m.)

## Traffic Incident Management Personnel Certification Exam

### Spring PSTC

- Exam is limited to 20 candidates, and PSTC prep program students have first spots.
- Sunday, April 6, 12:30-4:30 p.m.
- Tuition: \$150.00
- Application at: <https://www.pa.gov/services/osfc/get-certified-traffic-incident-management-personnel.html?appld=aemshell>
- Application Due: Friday, March 28 at the PSTC by 4 p.m.

### Fall PSTC

- Exam is limited to 20 candidates, and PSTC prep program students have first spots.
- Sunday, September 28, 12:30-5 p.m.
- Tuition: \$150.00
- Application at: <https://www.pa.gov/services/osfc/get-certified-traffic-incident-management-personnel.html?appld=aemshell>
- Application Due: Friday, September 19 at the PSTC by 4 p.m.

## Vehicle Rescue Technician Pro Board / IFSAC Certification Exam

- Exam is limited to 24 candidates, and PSTC students have first spots.
- Tuition: \$300.00 (estimated, may be lower or higher, details have not been provided by the PSFA at the time of this announcement)
- Those individuals who obtain professional certification, as a Vehicle Rescue Technician level, in conjunction with the Technician level program through PVRT24, may apply to receive Pennsylvania Department of Health certification as a Vehicle Rescue Technician.

### Spring 2025 NFPA 1670 – Vehicle Rescue Technician Pro Board/ IFSAC Certification Exam

- Saturday & Sunday, June 6 & 7, 8 a.m. - ?
- Report Time: 07:30 a.m.
- This will be a pilot exam for the PSFA NFPA 1670 – Vehicle Rescue Technician Pro Board / IFSAC Certification Exam.

### Fall 2025 NFPA 1670 – Vehicle Rescue Technician Pro Board/ IFSAC Certification Exam

- Saturday & Sunday, December 6 & 7, 8 a.m. - ?
- Report Time: 07:30 a.m.
- This will be a pilot exam for the PSFA NFPA 1670 – Vehicle Rescue Technician Pro Board / IFSAC Certification Exam.



## Firefighter I Pro Board / IFSAC Certification Written & Skills Exam

- Exam is limited to 60 candidates, and PSTC prep program students have first spots.
- Application and exam requirements available at PSFA website. \$225.00 Tuition
- Application available at: <https://www.pa.gov/en/services/osfc/get-certified-firefighter-1.html>

### Spring Firefighter I Exam:

- Exam Scheduled for Friday & Saturday, April 26 & 27; Written Exam: Friday, April 26 with report time of 6:30 p.m., Skills Exam: Saturday, April 27 with report time of 7:30 a.m.
- Registration/Spot for exam by submitting properly completed application to the PSTC by Friday, April 11 by 4 p.m.

### Fall Firefighter I Exam

- Exam Scheduled for Friday & Saturday, December 12 & 13; Written Exam: Friday, December 12 with report time of 6:30 p.m., Skills Exam: Saturday, December 13 with report time of 7:30 a.m.
- Registration/Spot for exam by submitting properly completed application to the PSTC by Tuesday, November 25 by 6 p.m.

## Firefighter II Pro Board / IFSAC Certification Written & Skills Exam

- Application and exam requirements available at PSFA website. \$200.00 Tuition
- Exam is limited to 40 candidates, and PSTC prep program students have first spots.
- Application available at: <https://www.pa.gov/en/services/osfc/get-certified-firefighter-2.html>

### Spring PSTC

- Exam Scheduled for Friday & Saturday, April 25 & 26;
- Written Exam: Friday, April 25 with report time of 6:30 p.m.,
- Skills Exam: Saturday, April 26 with report time of 7:30 a.m.
- Registration/Spot for exam by submitting properly completed application to the PSTC by Friday, April 11 by 4 p.m.

### Fall PSTC

- Exam Scheduled for Friday & Saturday, December 12 & 13;
- Written Exam: Friday, December 12 with report time of 6:30 p.m.,
- Skills Exam: Saturday, December 13 with report time of 7:30 a.m.
- Registration/Spot for exam by submitting properly completed application to the PSTC by Friday, December 5 by 4 p.m.



## REGISTRATION GUIDELINES

- 2025 Registration will be available starting December 19.
- PRE-REGISTRATION is required to ensure sufficient enrollment. Registration available at:
  - Preferred Method by College Self-Registration System: <https://westmoreland.augusoft.net/>
  - Or by Google form: <https://forms.gle/V6d4zy8QfPxUZ4w86> (Google Form)
- Students must meet the age requirement established by the State Fire Academy (PSFA) by the starting date of the program.
  - Proof of age can be required and should be available upon request.
- Students with facial hair will not be permitted to participate in programs requiring the use of breathing apparatus per PSFA standards.
- Students will be required to provide their own classroom materials, personal protection equipment, including breathing apparatus, work clothes and safety equipment as required for the program.
- Students are required to provide proof that the prerequisite training has been completed.
  - A copy of the pre-requisite certificate must be provided the first night of class to be accepted into the program.
- Students will be notified by e-mail of specific course information upon registration. A minimum number of students shall be required for any program.
  - Programs will be cancelled, also by email notification, if the minimum number of students for the class to run safely is not met.
- All classes require a minimum of ten (10) students, unless otherwise specified
- Maximum class is thirty (30) unless otherwise specified
- Classes not meeting minimum enrollment five (5) days prior to the start date **WILL BE CANCELED**
  - Tuition fees will be refunded if a program is canceled.
  - If you are unable to attend a course after registration, your cancellation must be received prior to the first program date to guarantee a refund or to guarantee that you are not billed as a student of the class.
- Students **SHOULD** arrive 15-minutes prior to start of class, with pen and paper.

### Certificates of Completion

- Certificates of Completion will be received electronically via your provided email and, depending on time of year, may take up to 30-days to be processed and emailed out.

### Westmoreland County Fire Departments

- Pending availability, Westmoreland County Fire Departments can schedule 3-8 hour special training FREE of charge at the PSTC.
- A completed facility usage form is required and can be located at the PSTC website under Facilities.
- A certificate of training for these sessions is also available but would require the use of a PSTC approved instructor at a cost of \$10 per student, with a minimum of ten (10) students.
- Due to new NFPA 1403 standards use of the Class A burn building by a department is no longer permitted.
  - Private department burns are still permitted and encouraged but must use the PSTC staff.

### Out-of-County Fire Departments

- Rental of the PSTC is available to out-of-county fire departments.
- Please contact the facility for pricing and requirements.

### Acquired Structure Burns

- The PSTC is willing to facilitate "Acquired Structure Burns." The burn must meet all DEP and PSFA documentation requirements which will be the responsibility of the owner/hosting fire department.
- Please contact the facility for pricing and requirements.

### Training Packages:

- Don't forget about our training packages! Contact the director today for more details.

For more information about First Responder classes, contact:

Marc Jackson, director/ Public Safety Training Center,  
724.872.2447  
[jacksonmarc@westmoreland.edu](mailto:jacksonmarc@westmoreland.edu)

## Westmoreland-Public Safety Training Center

Westmoreland County Community College is committed to facilitating excellence in education, training, certification, and support services for the emergency response community including fire fighters, police officers and emergency service workers.

The Westmoreland Public Safety Training Center (PSTC) is designed to serve as the premiere source for keeping our first responders up-to-date with the essential skills needed to perform their jobs safely. Trainings are available in the areas of fire service, rescue, hazardous materials, emergency medical services and law enforcement.

Located in South Huntingdon Township, the facility features a six-story tower with an attached 2-1/2 story residential building that simulates industrial, commercial and residential structures. Also on site are a classroom/administration building, Class A live burn building, outdoor firing range, rubble pile, training props and pond.

Plus, with the recent expansion of classrooms at the training facility, the PSTC is able to offer more courses in the evenings and weekends to meet the needs of first responders.

For more information or to schedule training, contact Marc Jackson, director/PSTC, at 724.872.2447 or [jacksonmarc@westmoreland.edu](mailto:jacksonmarc@westmoreland.edu).

Westmoreland-PSTC  
65 Public Safety Drive Smithton, PA 15479  
[Westmoreland.edu/pstc](http://Westmoreland.edu/pstc)



## Municipal Police Officers' Training Academy

Established in 1979, Westmoreland's Municipal Police Officers' Training Academy has graduated over 900 cadets who now serve and protect their communities at the local, county, state and federal level.

All classes are held at the Westmoreland-Public Safety Training Center, located off Interstate 70 in Smithton, PA. The facility houses a 50-yard, 17-position shooting range, classrooms, simunitions house, traffic roadways, police vehicles and a six-story tower for complex building searches and rescues.



For more information visit  
[westmoreland.edu/policeacademy](http://westmoreland.edu/policeacademy).

If you have questions after viewing  
the website contact Frank Newill at  
724.925.4298 or  
[newillf@westmoreland.edu](mailto:newillf@westmoreland.edu).