

2nd Floor 2024 Minimum Repairs

KEY:

Door 

Window 

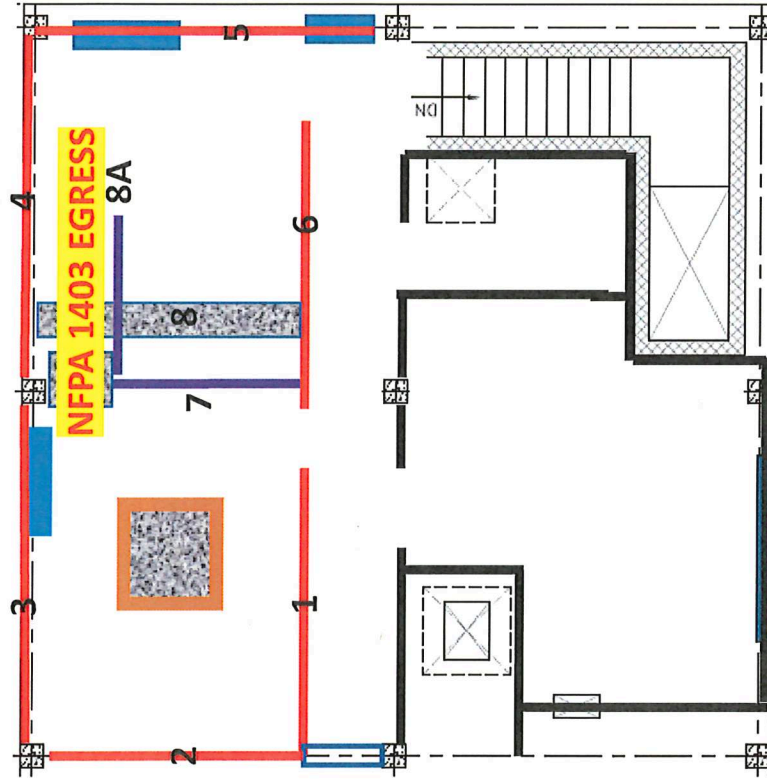
Walls 

New Walls Needed  

Updated Areas for NFPA 1402 Requirements 

Chopout repaired/filled in And thermal layering 

New thermal layering 



NOT TO SCALE

CONSULTANTS

PROFESSIONAL

PROJECT NAME

WESTMORELAND
 COUNTY COMMUNITY
 COLLEGE CLASS A
 BURN BUILDING

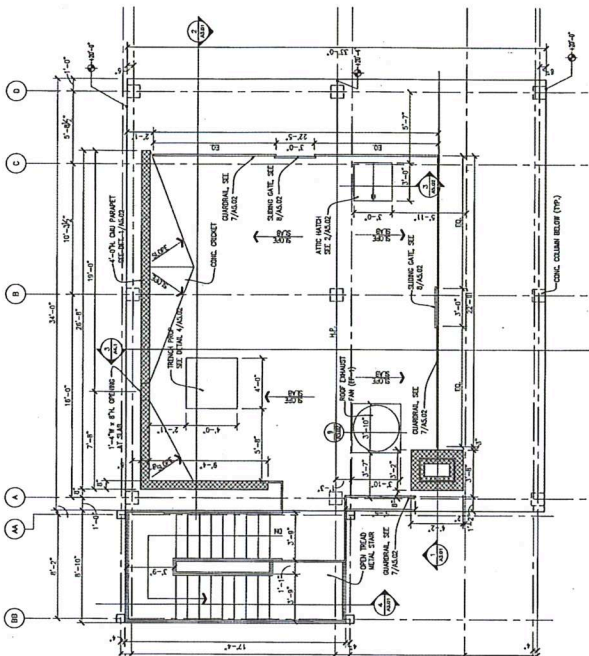
OWNER:
 WESTMORELAND COUNTY
 COMMUNITY COLLEGE
 YOUNGWOOD, PA. 15087

REF PLAN

MARK DATE DESCRIPTION
 ISSUE: 05 / 02 / 07
 PROJECT NO: 07-2200-0175
 CAD/DWG FILE: X0000000.dwg
 DRAWN BY: JOC
 CHECKED BY: JOC
 © L. Robert Kimball & Associates
 Architects and Engineers, Inc.

SHEET TITLE
 FIRST FLOOR PLAN,
 SECOND-FLOOR-PLAN,
 ROOF PLAN
 AND
 SCHEDULES

A1.01



ROOF PLAN
 1/4" = 1'-0"

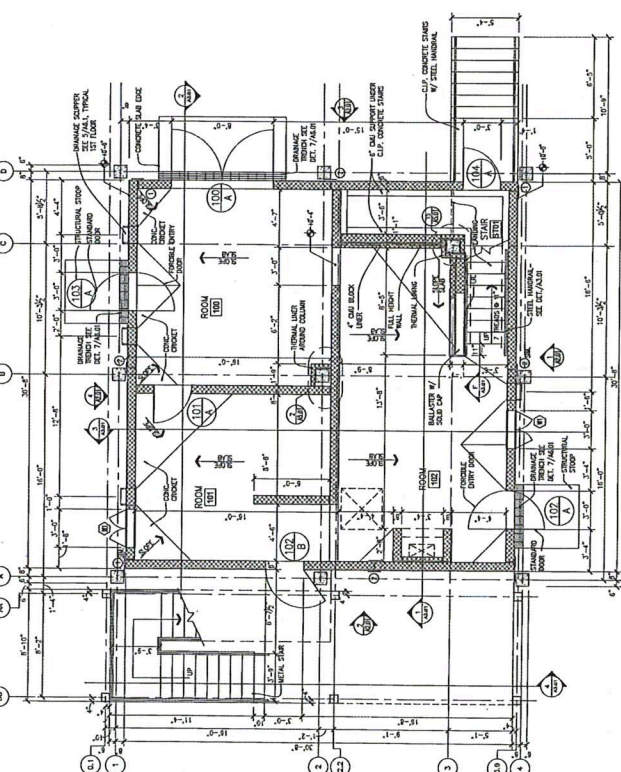
ROOM FINISH SCHEDULE

ROOM NO	ROOM NAME	FLOOR	WALLS		CEILING	REMARKS
			BASE	TOP		
101	CLASS ROOM	CONCRETE	CONCRETE	CONCRETE	CONCRETE	
102	CLASS ROOM	CONCRETE	CONCRETE	CONCRETE	CONCRETE	
103	CLASS ROOM	CONCRETE	CONCRETE	CONCRETE	CONCRETE	
104	CLASS ROOM	CONCRETE	CONCRETE	CONCRETE	CONCRETE	
105	CLASS ROOM	CONCRETE	CONCRETE	CONCRETE	CONCRETE	
106	CLASS ROOM	CONCRETE	CONCRETE	CONCRETE	CONCRETE	
107	CLASS ROOM	CONCRETE	CONCRETE	CONCRETE	CONCRETE	
108	CLASS ROOM	CONCRETE	CONCRETE	CONCRETE	CONCRETE	
109	CLASS ROOM	CONCRETE	CONCRETE	CONCRETE	CONCRETE	
110	CLASS ROOM	CONCRETE	CONCRETE	CONCRETE	CONCRETE	

DOOR AND FRAME SCHEDULE

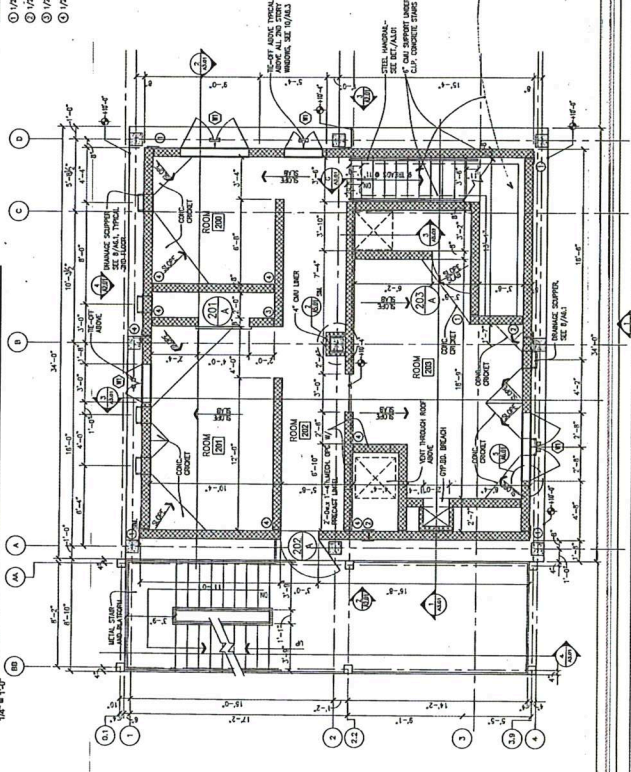
DOOR NO	TYPE	SIZE	NO	HT	THK	MATERIAL	GLAZING	TYPE	MANTL	JAMB	SILL	DETAIL	FIRE RATING	LABEL	HOUR SET	REMARKS
101	SW	3'-0" x 7'-0"	1	7'-0"	1 1/2"	WOOD	GLASS	SW	WOOD	WOOD	WOOD	101	1	101	1	WOOD DOOR WITH GLASS
102	SW	3'-0" x 7'-0"	1	7'-0"	1 1/2"	WOOD	GLASS	SW	WOOD	WOOD	WOOD	102	1	102	1	WOOD DOOR WITH GLASS
103	SW	3'-0" x 7'-0"	1	7'-0"	1 1/2"	WOOD	GLASS	SW	WOOD	WOOD	WOOD	103	1	103	1	WOOD DOOR WITH GLASS
104	SW	3'-0" x 7'-0"	1	7'-0"	1 1/2"	WOOD	GLASS	SW	WOOD	WOOD	WOOD	104	1	104	1	WOOD DOOR WITH GLASS
105	SW	3'-0" x 7'-0"	1	7'-0"	1 1/2"	WOOD	GLASS	SW	WOOD	WOOD	WOOD	105	1	105	1	WOOD DOOR WITH GLASS
106	SW	3'-0" x 7'-0"	1	7'-0"	1 1/2"	WOOD	GLASS	SW	WOOD	WOOD	WOOD	106	1	106	1	WOOD DOOR WITH GLASS
107	SW	3'-0" x 7'-0"	1	7'-0"	1 1/2"	WOOD	GLASS	SW	WOOD	WOOD	WOOD	107	1	107	1	WOOD DOOR WITH GLASS
108	SW	3'-0" x 7'-0"	1	7'-0"	1 1/2"	WOOD	GLASS	SW	WOOD	WOOD	WOOD	108	1	108	1	WOOD DOOR WITH GLASS
109	SW	3'-0" x 7'-0"	1	7'-0"	1 1/2"	WOOD	GLASS	SW	WOOD	WOOD	WOOD	109	1	109	1	WOOD DOOR WITH GLASS
110	SW	3'-0" x 7'-0"	1	7'-0"	1 1/2"	WOOD	GLASS	SW	WOOD	WOOD	WOOD	110	1	110	1	WOOD DOOR WITH GLASS

GENERAL NOTES:
 1. SEE SHEET A1.02 FOR DOOR TYPES AND DETAILS.



FIRST FLOOR PLAN
 1/4" = 1'-0"

- REMARKS:
- 1. 1/2" EPS JOINT SEE DET. 3/A1.01
 - 2. 1/2" EPS JOINT SEE DET. 4/A1.01
 - 3. 1/2" EPS JOINT SEE DET. 5/A1.01
 - 4. 1/2" EPS JOINT SEE DET. 6/A1.01



SECOND FLOOR PLAN
 1/4" = 1'-0"

CONSULTANTS

PROFESSIONAL

PROJECT NAME

WESTMORELAND COUNTY COMMUNITY COLLEGE CLASS A BURN BUILDING
 OWNER: WESTMORELAND COUNTY COMMUNITY COLLEGE
 YOUNGWOOD, PA. 15087

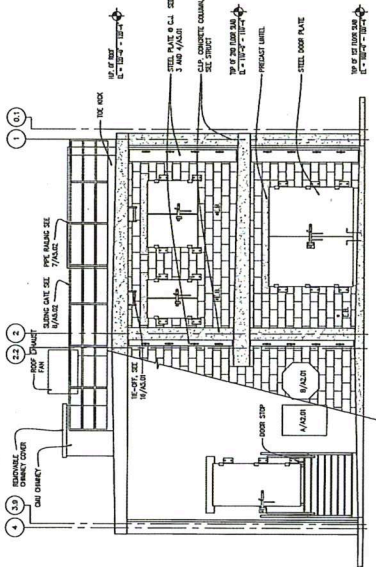
KEY PLAN

MARK	DATE	DESCRIPTION
ISSUE	05 / 02 / 07	
PROJECT NO.	07-2200-0775	
CAD FILE	20000000.dwg	
DATE		
CHECKED BY:	GG	

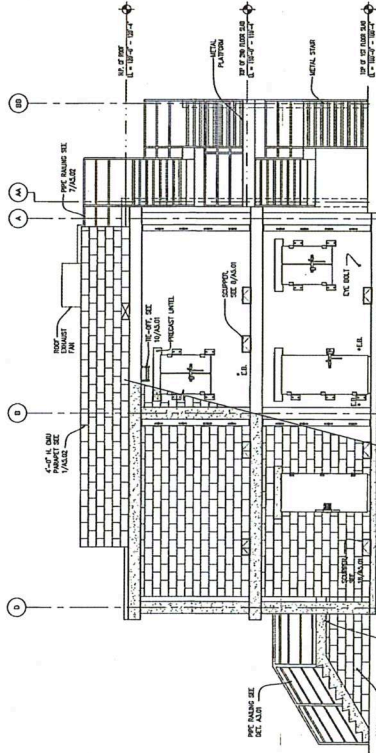
SHEET TITLE

BUILDING ELEVATIONS

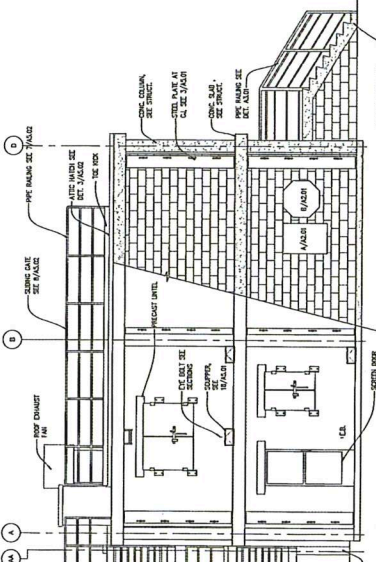
A2.01



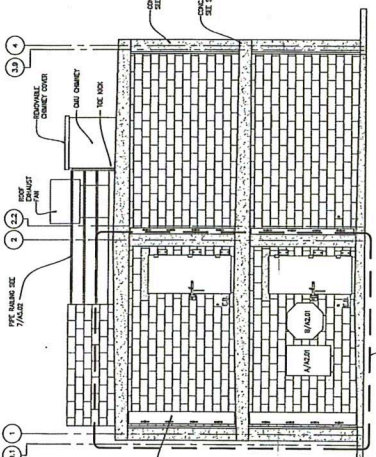
3 EAST ELEVATION
1/4" = 1'-0"



4 NORTH ELEVATION
1/4" = 1'-0"



1 SOUTH ELEVATION
1/4" = 1'-0"



2 WEST ELEVATION
1/4" = 1'-0"

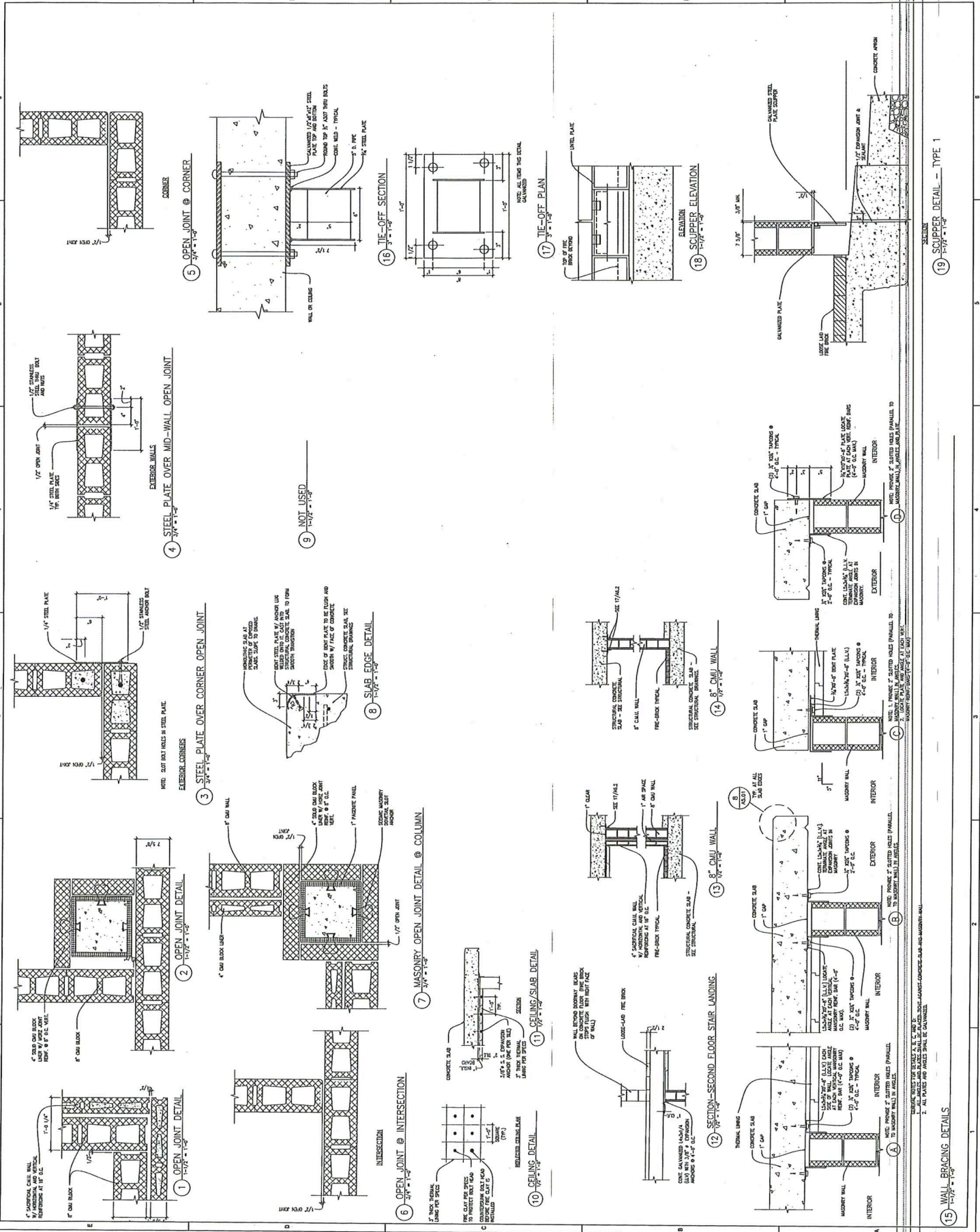
ATTENTION:
 ALL LIVE FIRE TRAINING IN THIS BUILDING MUST BE IN COMPLIANCE WITH CURRENT NFPA 1403 STANDARDS
 WESTMORELAND COUNTY COMMUNITY COLLEGE

- LIVE FIRE TRAINING DESIGN CRITERIA**
- THE BUILDING IS TO BE USED FOR THE FOLLOWING PURPOSES:
1. LIVE FIRE TRAINING
 2. FIRE SCENARIO TRAINING
 3. FIRE SCENARIO TRAINING
 4. FIRE SCENARIO TRAINING
 5. FIRE SCENARIO TRAINING
 6. FIRE SCENARIO TRAINING
 7. FIRE SCENARIO TRAINING
 8. FIRE SCENARIO TRAINING
 9. FIRE SCENARIO TRAINING
 10. FIRE SCENARIO TRAINING

USE NFPA 1403 ALUMINUM SIGNAGE

USE CRITERIA ALUMINUM SIGNAGE

CONSULTANTS	PROFESSIONAL	PROJECT NAME	WESTMORELAND COUNTY COMMUNITY COLLEGE CLASS A BURN BUILDING
		OWNER	WESTMORELAND COUNTY COMMUNITY COLLEGE
		ADDRESS	YOUNGWOOD, PA 15087
		DATE	05/02/07
		PROJECT NO.	07-2500-0775
		DATE FILED	XXXXXX00000000
		SCALE	AS SHOWN
		CHECKED BY	DOG
		DESIGNED BY	L. Robert Kimball & Associates
		DATE	05/02/07
		BY	Architects and Engineers, Inc.



KEY PLAN	MARK	DATE	DESCRIPTION
	ISSUE	05/02/07	
	PROJECT NO.	07-2500-0775	
	DATE FILED	XXXXXX00000000	
	SCALE	AS SHOWN	
	CHECKED BY	DOG	
	DESIGNED BY	L. Robert Kimball & Associates	
	DATE	05/02/07	
	BY	Architects and Engineers, Inc.	

CONSULTANTS

PROFESSIONAL

PROJECT NAME

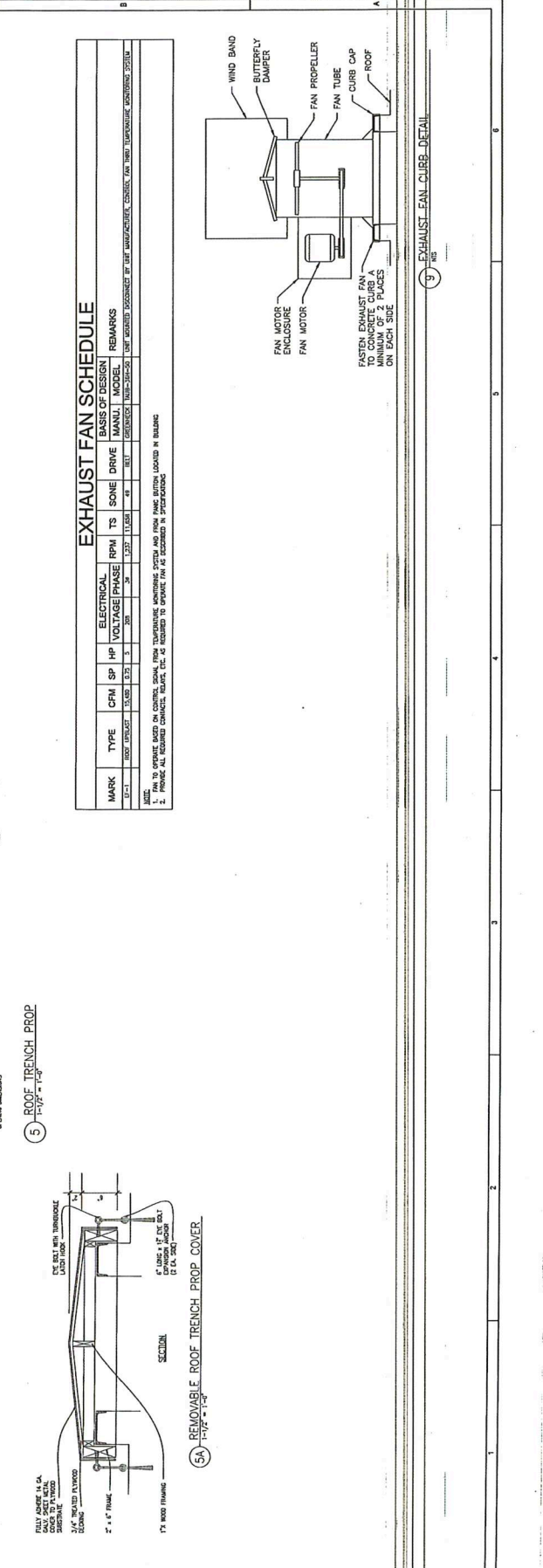
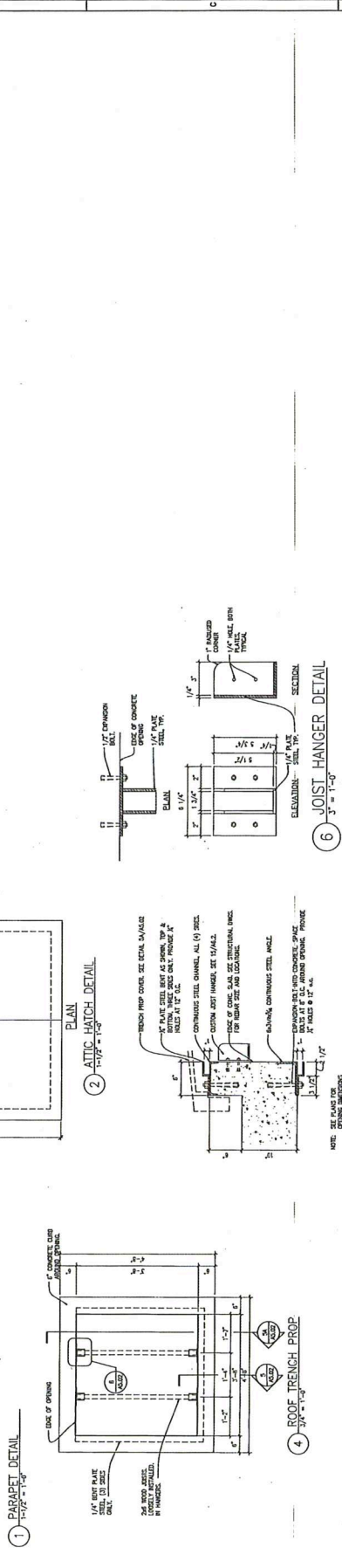
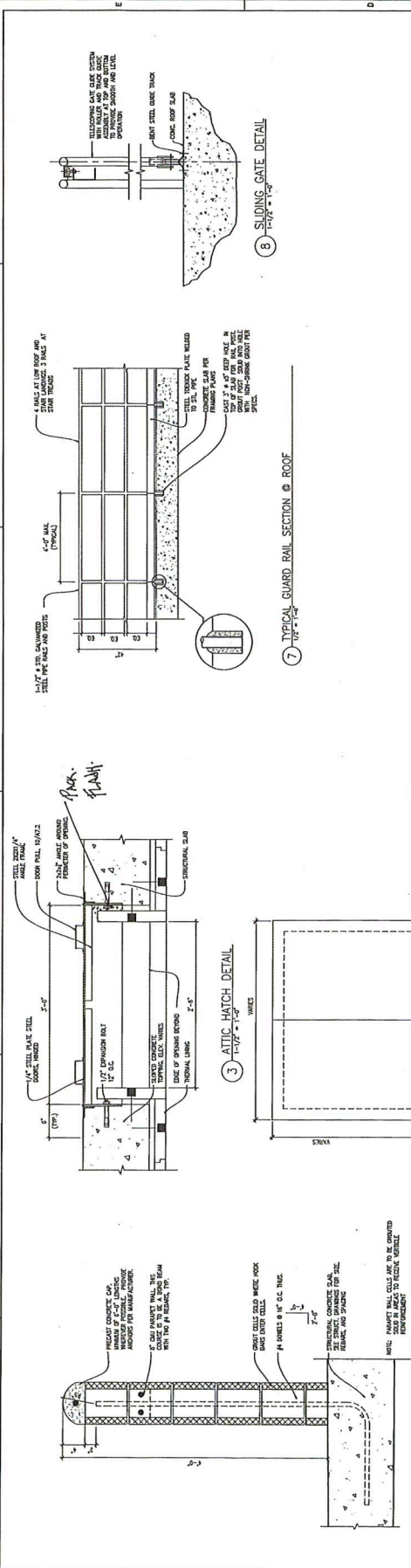
WESTMORELAND
 COUNTY COMMUNITY
 COLLEGE CLASS A
 BURN BUILDING
 OWNER
 WESTMORELAND COUNTY
 COMMUNITY COLLEGE
 YOUNGWOOD, PA. 15087

KEY PLAN

MARK	DATE	DESCRIPTION
ISSUE	05/02/07	
PROJECT NO.	07-2200-0775	
CAD FILE	20000000.dwg	
DESIGNED BY	DLG	
CHECKED BY	DLG	
SHEET TITLE		

ROOF DETAILS

A5.02



NOTES:
 1. PROVIDE ALL REQUIRED CONNECTIONS TO THE MANUFACTURER'S CONNECTION SYSTEM.
 2. PROVIDE ALL REQUIRED CONNECTIONS TO THE MANUFACTURER'S CONNECTION SYSTEM.
 3. PROVIDE ALL REQUIRED CONNECTIONS TO THE MANUFACTURER'S CONNECTION SYSTEM.

CONSULTANTS

PROFESSIONAL

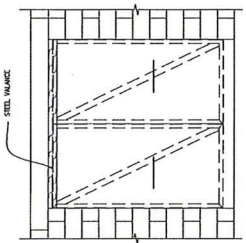
PROJECT NAME

WESTMORELAND
 COUNTY COMMUNITY
 COLLEGE CLASS A
 BURN BUILDING
 OWNER
 WESTMORELAND COUNTY
 COMMUNITY COLLEGE
 YOUNGWOOD, PA. 15087

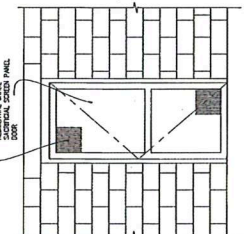
MARK	DATE	DESCRIPTION
ISSUE	05/02/07	
PROJECT NO.	07-2005-0175	
DATE PLOTTED	05/02/07	
DESIGNED BY	AKS	
CHECKED BY	DS	
© L. Robert Kimball & Associates Architects and Engineers, Inc.		

DOOR TYPES
 AND DETAILS

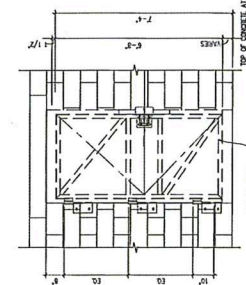
A6.01



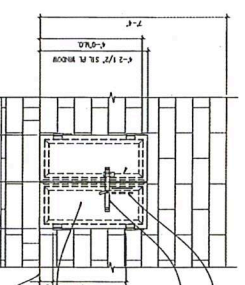
TYPE C - PLATE STEEL SLIDING DOOR
 1/2" x 1-1/2"



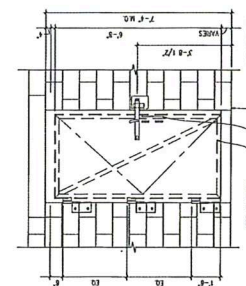
TYPE F - WOOD SCREEN DOOR
 1/2" x 1-1/2"



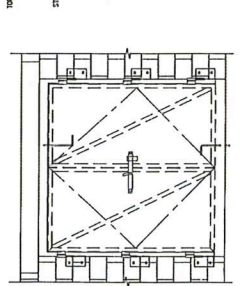
TYPE B - PLATE STEEL FORCIBLE ENTRY
 1/2" x 1-1/2"



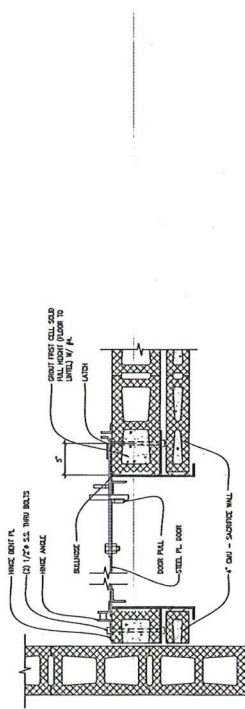
TYPE G - STEEL SHUTTER ELEVATION
 1/2" x 1-1/2"



TYPE A - PLATE STEEL DOUBLE DOOR
 1/2" x 1-1/2"



TYPE D - STEEL DOUBLE DOOR
 1/2" x 1-1/2"



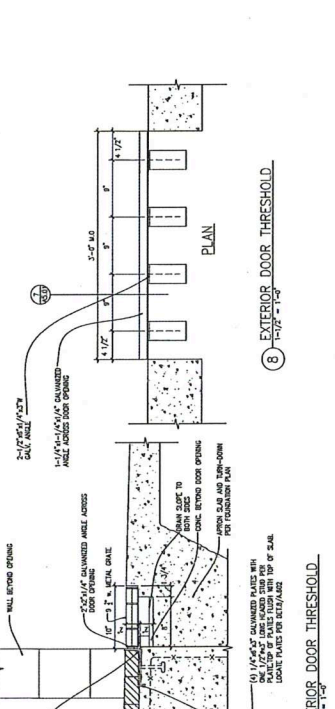
DOOR JAMB DETAIL
 1/2" x 1-1/2" x 1-1/2"

DOOR OR WINDOW HEAD DETAIL
 1/2" x 1-1/2" x 1-1/2"

DOOR SILL DETAIL
 1/2" x 1-1/2" x 1-1/2"

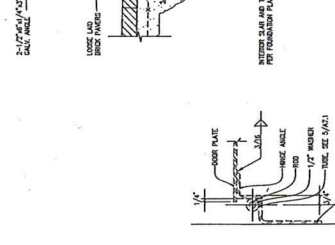
DOOR JAMB DETAIL
 1/2" x 1-1/2" x 1-1/2"

WINDOW JAMB DETAIL
 1/2" x 1-1/2" x 1-1/2"

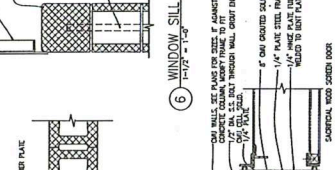


EXTERIOR DOOR THRESHOLD
 1/2" x 1-1/2" x 1-1/2"

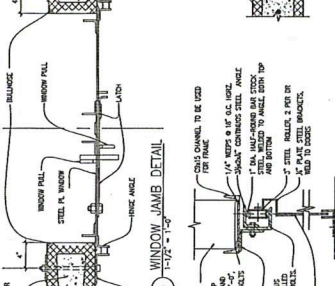
EXTERIOR DOOR THRESHOLD
 1/2" x 1-1/2" x 1-1/2"



WINDOW SILL DETAIL
 1/2" x 1-1/2" x 1-1/2"



WINDOW JAMB DETAIL
 1/2" x 1-1/2" x 1-1/2"



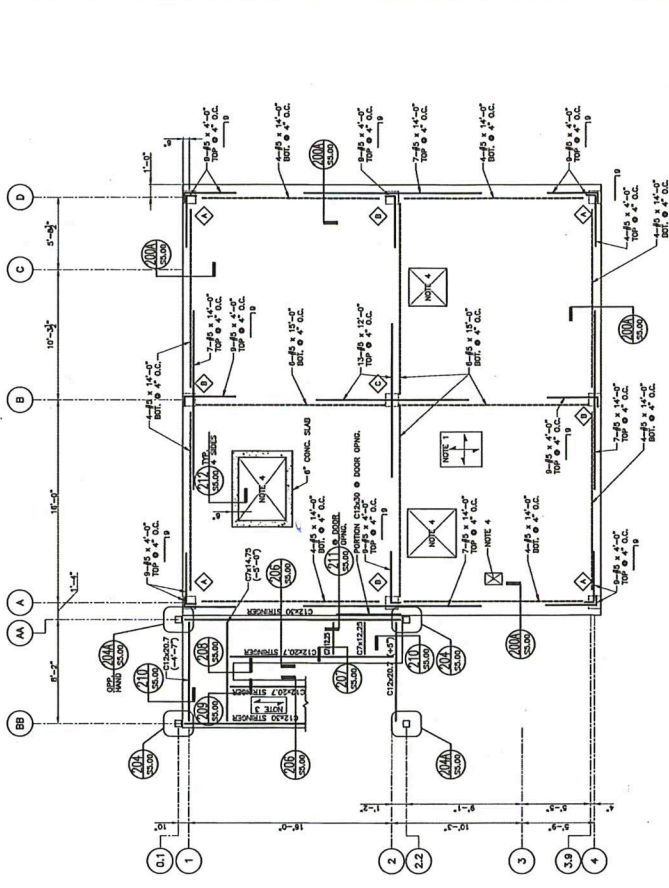
SLIDING DOOR-HEAD/SILL DETAIL
 1/2" x 1-1/2" x 1-1/2"

FORCIBLE ENTRY DOOR
 1/2" x 1-1/2" x 1-1/2"

DOOR HINGE DETAIL
 1/2" x 1-1/2" x 1-1/2"

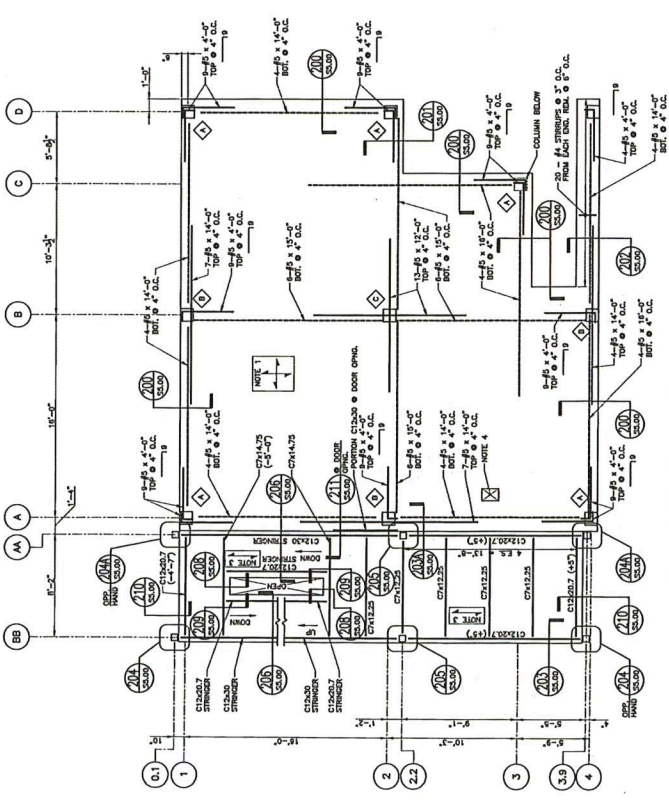


PLAN



SECOND FLOOR FRAMING PLAN
 SCALE: 1/4" = 1'-0"

- NOTES:
- 12" MIN. CONC. SLAB O.C. TOP & BECK. SEE FINISHED FLOOR FINISH FROM 12" MIN. CONC. SLAB. WALLS TO BE 12" MIN. CONC. WALL O.C. WALLS PER ARCH. FINISH. SEE PLAN FOR ADULT SLAB FINISH.
 - BEAM / STEEL = 112"-24" TYP. UNLESS NOTED (A) FROM 112"-24".
 - 12" MIN. CONC. WALL O.C. UNLESS NOTED (A) FROM 12" MIN. CONC. WALL O.C.
 - SLAB FIN. PER TYP. DETAILS
 - 12" MIN. CONC. WALL O.C. UNLESS NOTED (A) FROM 12" MIN. CONC. WALL O.C.
 - ALL CONC. MASONRY PARTITIONS TO BE CONCRETE MASONRY PARTITIONS PER ARCH. FINISH. CONCRETE WALL O.C. WALLS PER ARCH. FINISH. SEE PLAN FOR ADULT SLAB FINISH. ALL MASONRY PARTITION OPENINGS TO BE 12" MIN. CONC. WALL O.C. UNLESS NOTED (A) FROM 12" MIN. CONC. WALL O.C.
 - ALL EXTERIOR STEEL TO BE GALVANIZED.
 - ALL EXTERIOR STEEL CONNECTIONS TO BE BOLTED.



ROOF FRAMING PLAN
 SCALE: 1/4" = 1'-0"

- NOTES:
- 12" MIN. CONC. SLAB O.C. TOP & BECK. SEE FINISHED FLOOR FINISH FROM 12" MIN. CONC. SLAB. WALLS TO BE 12" MIN. CONC. WALL O.C. WALLS PER ARCH. FINISH. SEE PLAN FOR ADULT SLAB FINISH.
 - BEAM / STEEL = 112"-24" TYP. UNLESS NOTED (A) FROM 112"-24".
 - 12" MIN. CONC. WALL O.C. UNLESS NOTED (A) FROM 12" MIN. CONC. WALL O.C.
 - SLAB FIN. PER TYP. DETAILS
 - 12" MIN. CONC. WALL O.C. UNLESS NOTED (A) FROM 12" MIN. CONC. WALL O.C.
 - ALL CONC. MASONRY PARTITIONS TO BE CONCRETE MASONRY PARTITIONS PER ARCH. FINISH. CONCRETE WALL O.C. WALLS PER ARCH. FINISH. SEE PLAN FOR ADULT SLAB FINISH. ALL MASONRY PARTITION OPENINGS TO BE 12" MIN. CONC. WALL O.C. UNLESS NOTED (A) FROM 12" MIN. CONC. WALL O.C.
 - ALL EXTERIOR STEEL TO BE GALVANIZED.
 - ALL EXTERIOR STEEL CONNECTIONS TO BE BOLTED.

CONSULTANTS



PROFESSIONAL

PROJECT NAME
WESTMORELAND COUNTY COMMUNITY COLLEGE CLASS A BURN BUILDING
 WESTMORELAND COUNTY COMMUNITY COLLEGE
 YOUNGWOOD, PA 15087

DATE: 05/02/07
 DRAWN BY: RSB
 CHECKED BY: RSB

SECTION TITLE
SECTIONS AND DETAILS

SCALE: 1/4" = 1'-0"

SCALE: 1/4" = 1'-0"

SCALE: 1/4" = 1'-0"

SCALE: 1/4" = 1'-0"

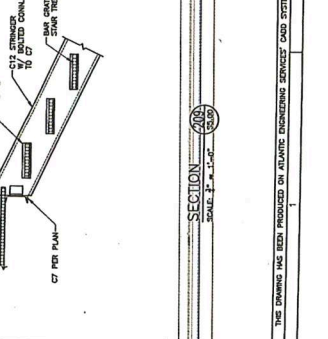
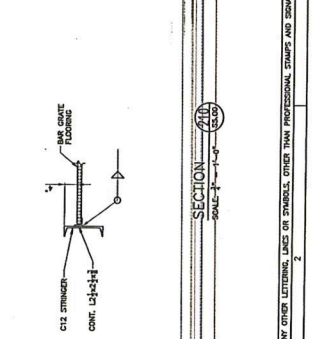
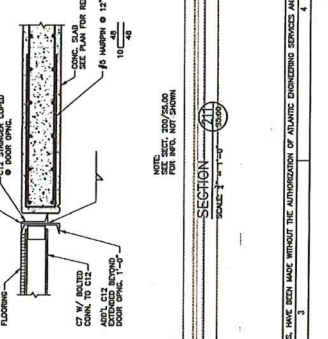
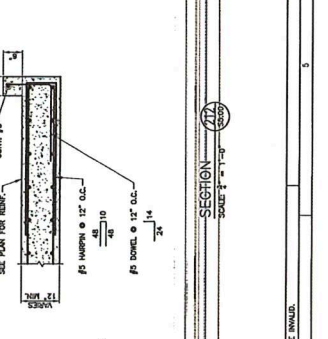
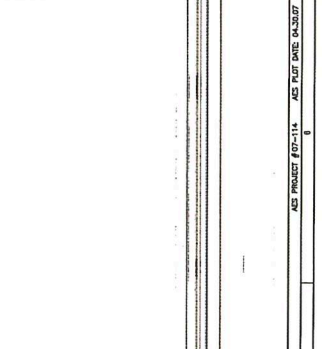
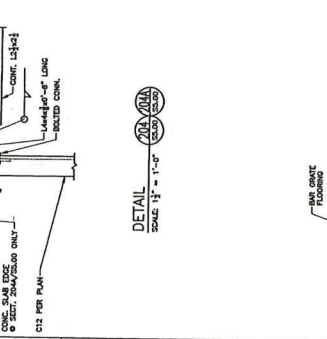
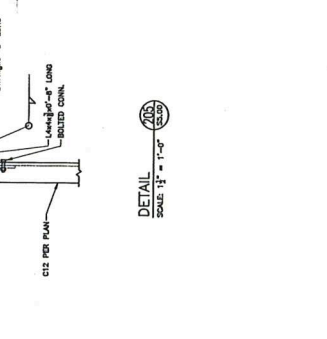
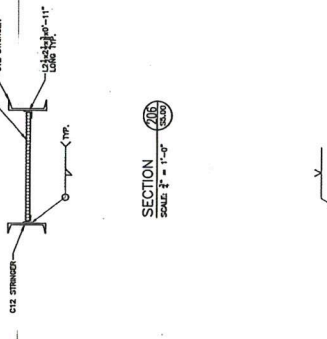
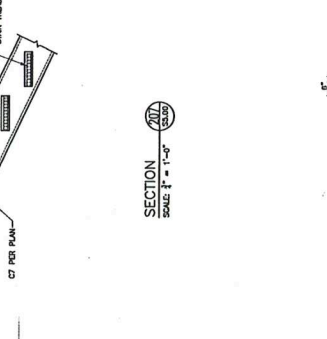
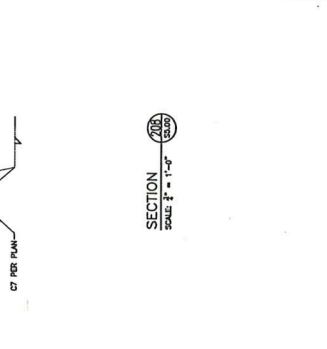
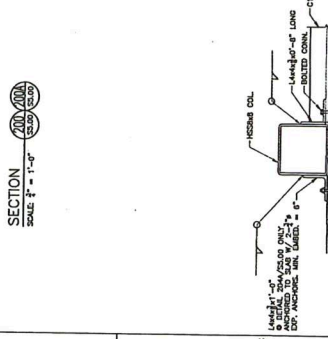
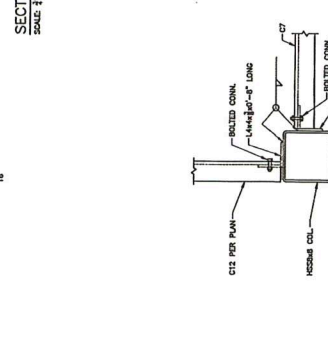
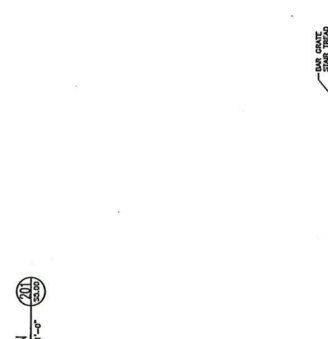
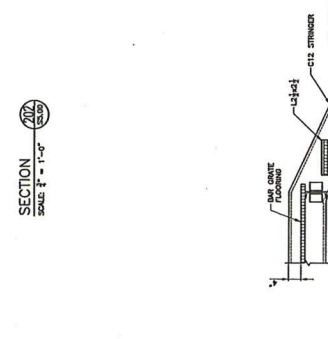
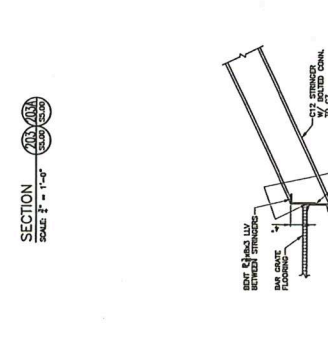
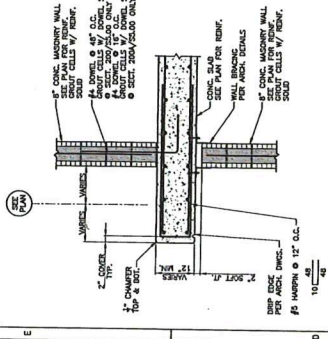
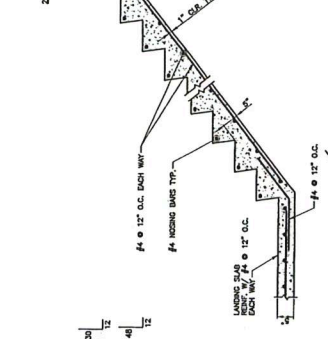
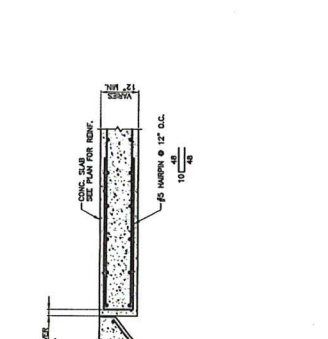
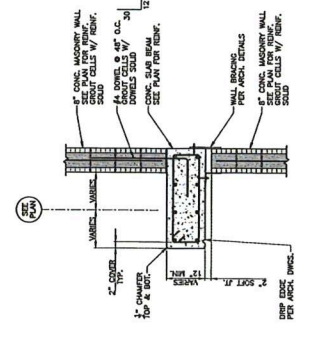
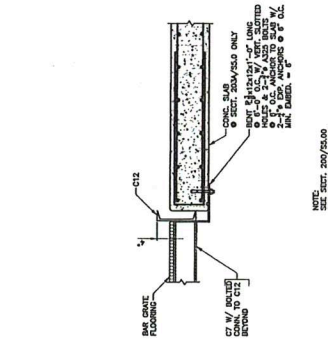
SCALE: 1/4" = 1'-0"

SCALE: 1/4" = 1'-0"

SCALE: 1/4" = 1'-0"

SCALE: 1/4" = 1'-0"

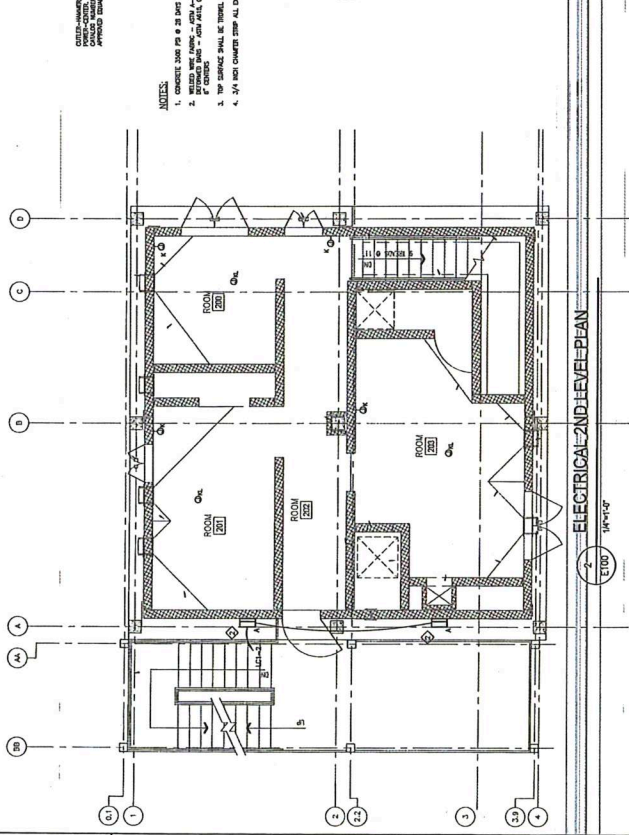
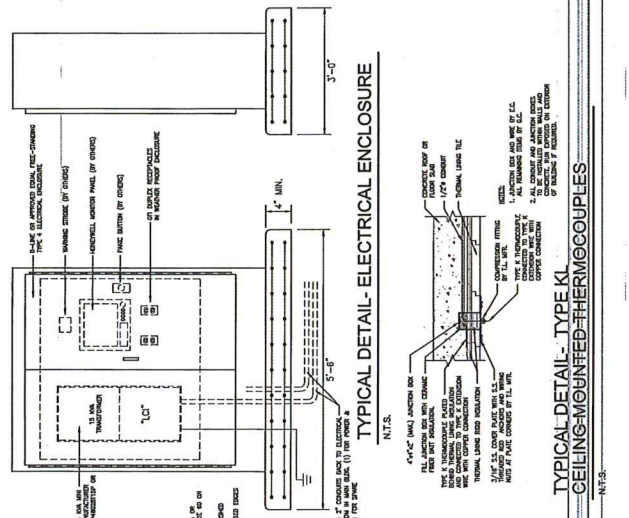
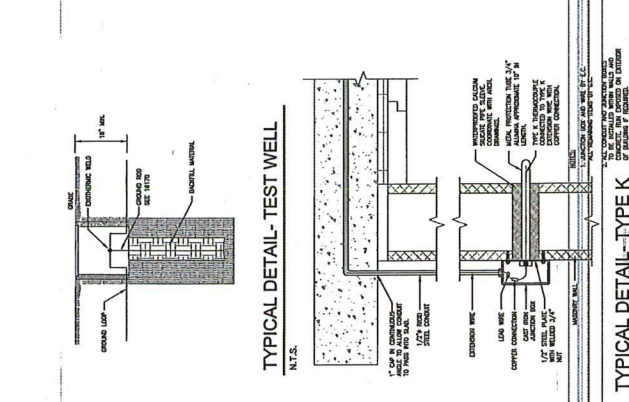
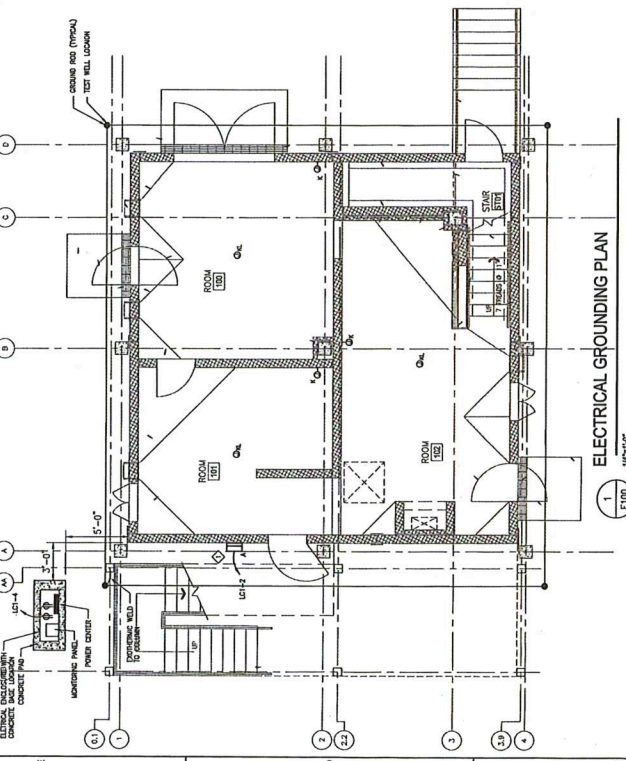
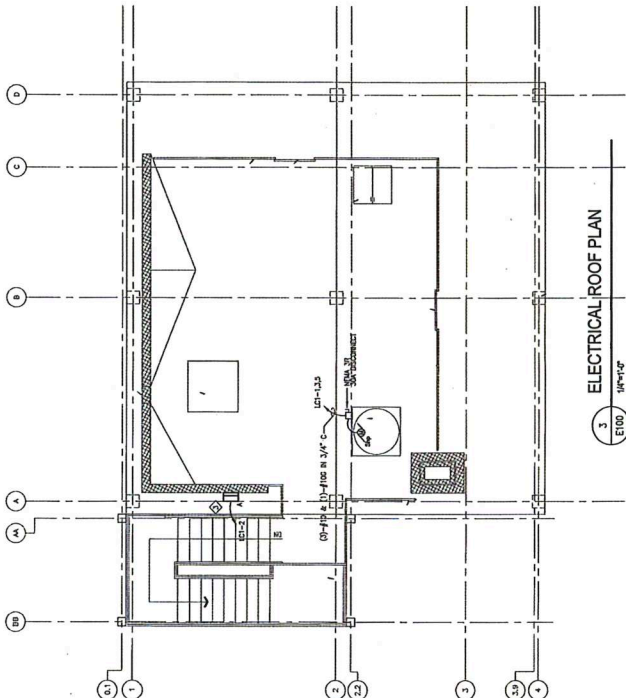
SCALE: 1/4" = 1'-0"



**WESTMORELAND
COUNTY COMMUNITY
COLLEGE CLASS A
BURN BUILDING**
OWNER
WESTMORELAND COUNTY
COMMUNITY COLLEGE
YOUNGWOOD, PA 15087

MARK	DATE	DESCRIPTION
05	02 / 07	ISSUE
07	2000 - 0715	PROJECT NO.
07	2000 - 0715	CAD DWG FILE
07	2000 - 0715	DATE
07	2000 - 0715	DRAWN BY
07	2000 - 0715	CHECKED BY
07	2000 - 0715	DESIGNED BY
07	2000 - 0715	PROJECT NO.
07	2000 - 0715	DATE
07	2000 - 0715	DRAWN BY
07	2000 - 0715	CHECKED BY
07	2000 - 0715	DESIGNED BY
07	2000 - 0715	PROJECT NO.
07	2000 - 0715	DATE
07	2000 - 0715	DRAWN BY
07	2000 - 0715	CHECKED BY
07	2000 - 0715	DESIGNED BY

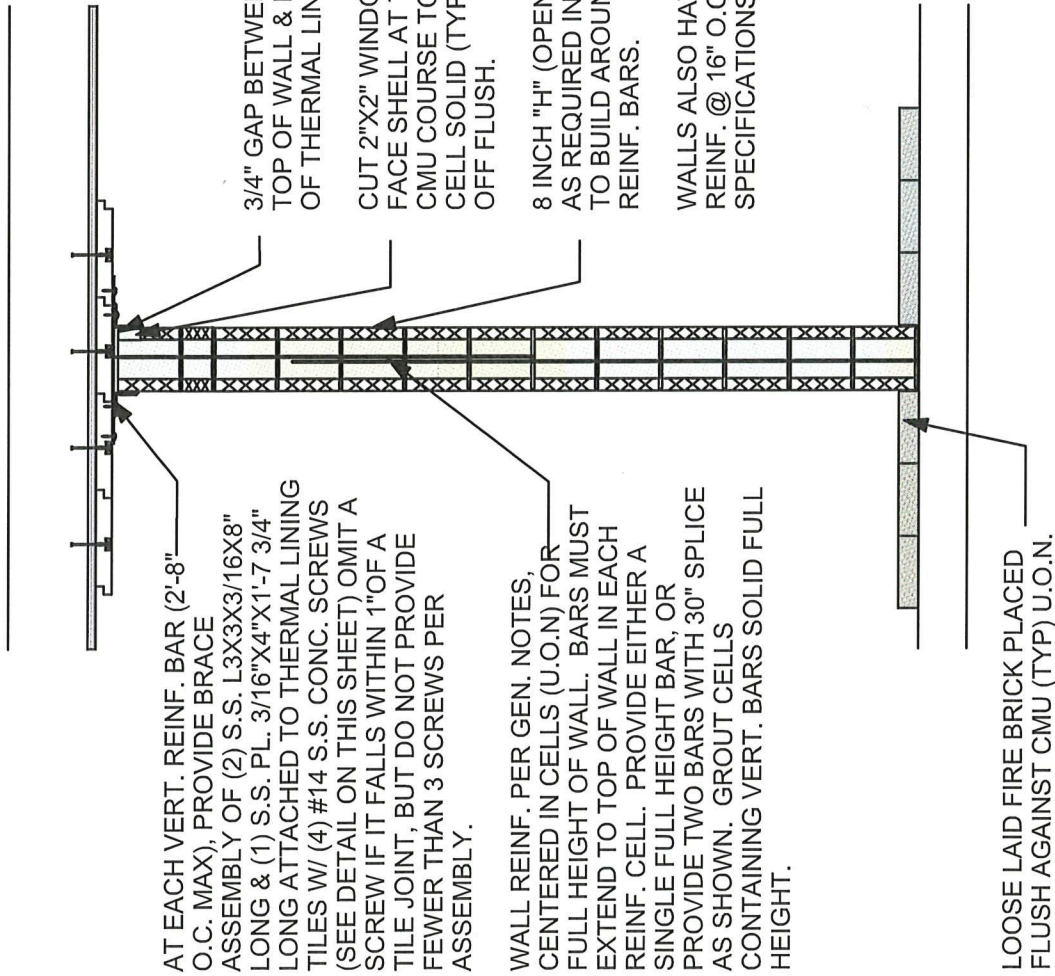
- NOTES:**
- 1. ALL WORK SHALL BE IN ACCORDANCE WITH THE NATIONAL ELECTRICAL CODE (NEC) AND THE NATIONAL FIRE ALARM AND SIGNAL CODE (NFPA 72).
 - 2. ALL WORK SHALL BE IN ACCORDANCE WITH THE NATIONAL ELECTRICAL CODE (NEC) AND THE NATIONAL FIRE ALARM AND SIGNAL CODE (NFPA 72).
 - 3. ALL WORK SHALL BE IN ACCORDANCE WITH THE NATIONAL ELECTRICAL CODE (NEC) AND THE NATIONAL FIRE ALARM AND SIGNAL CODE (NFPA 72).
 - 4. ALL WORK SHALL BE IN ACCORDANCE WITH THE NATIONAL ELECTRICAL CODE (NEC) AND THE NATIONAL FIRE ALARM AND SIGNAL CODE (NFPA 72).



**TYPICAL DETAIL - TYPE K
WALL MOUNTED THERMOCOUPLES**
N.T.S.

**TYPICAL DETAIL - TYPE KI
CEILING MOUNTED THERMOCOUPLES**
N.T.S.

ELECTRICAL 2ND LEVEL PLAN
1/8" = 1'-0"



AT EACH VERT. REINF. BAR (2'-8" O.C. MAX), PROVIDE BRACE ASSEMBLY OF (2) S.S. L3X3X3/16X8" LONG & (1) S.S. PL. 3/16"X4"X1'-7 3/4" LONG ATTACHED TO THERMAL LINING TILES W/ (4) #14 S.S. CONC. SCREWS (SEE DETAIL ON THIS SHEET) OMIT A SCREW IF IT FALLS WITHIN 1" OF A TILE JOINT, BUT DO NOT PROVIDE FEWER THAN 3 SCREWS PER ASSEMBLY.

WALL REINF. PER GEN. NOTES, CENTERED IN CELLS (U.O.N) FOR FULL HEIGHT OF WALL. BARS MUST EXTEND TO TOP OF WALL IN EACH REINF. CELL. PROVIDE EITHER A SINGLE FULL HEIGHT BAR, OR PROVIDE TWO BARS WITH 30" SPLICE AS SHOWN. GROUT CELLS CONTAINING VERT. BARS SOLID FULL HEIGHT.

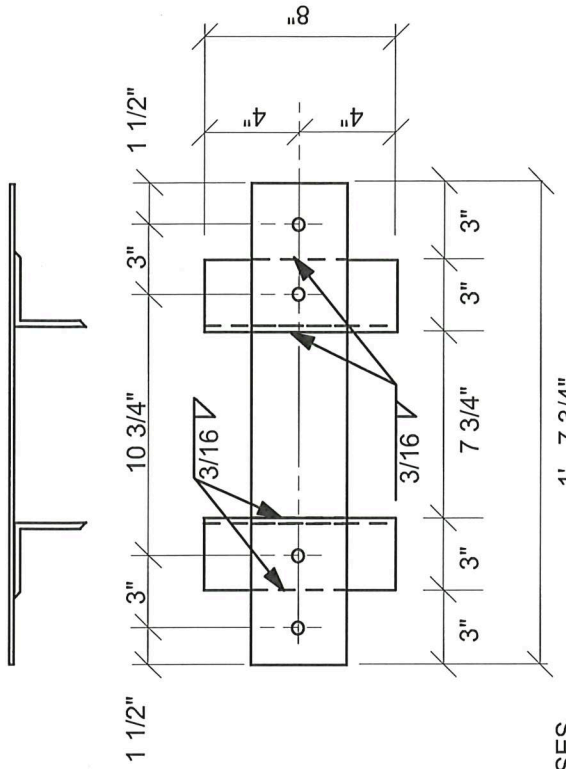
LOOSE LAID FIRE BRICK PLACED FLUSH AGAINST CMU (TYP) U.O.N.

3/4" GAP BETWEEN TOP OF WALL & BOTTOM OF THERMAL LINING.

CUT 2"X2" WINDOW IN FACE SHELL AT TOP OF CMU COURSE TO GROUT CELL SOLID (TYP). STRIKE OFF FLUSH.

8 INCH "H" (OPEN END) CMU AS REQUIRED IN TOP COURSES TO BUILD AROUND VERT. REINF. BARS.

WALLS ALSO HAVE HORIZONTAL REINF. @ 16" O.C. PER SPECIFICATIONS.



WALL BRACING ASSEMBLY
Scale: 1 1/2" = 1'-0"

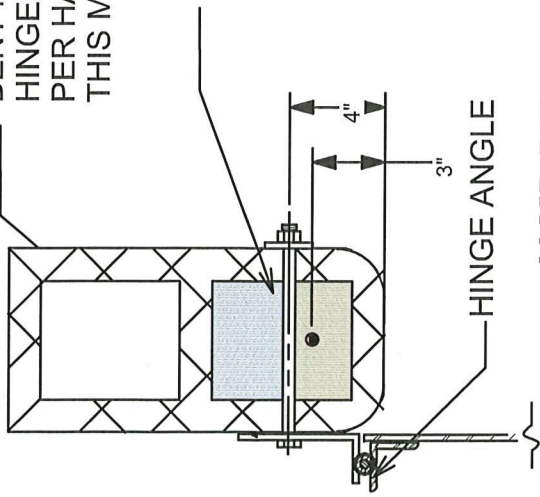
Scale: 1 1/2" = 1'-0"

HIGH TEMPERATURE LININGS
INTERIOR WALL REINF / BRACING
2014

Prepared by High Temperature Linings
P. O. Box 1240, White Stone, VA 22578
800-411-6313 / www.firetrain.com

BENT PL W/
HINGE ASSEMBLY
PER HARDWARE DETAILS IN
THIS MANUAL

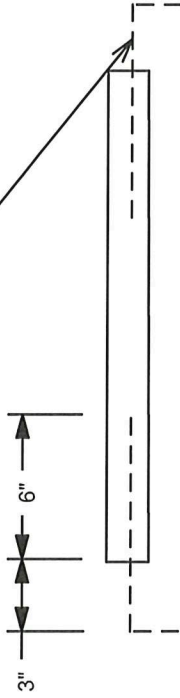
(2) 1/2" DIA S.S. THRU-BOLTS & NUTS
SEE HARDWARE DETAILS IN THIS MANUAL



JAMB DETAIL

Scale: 1 1/2" = 1'-0"

(1) #4 X 18" LONG + 4" HOOK EA END.
TIE HOOK INTO REINF JAMB AND GROUT
SOLID INTEGRAL WITH JAMB GROUTING



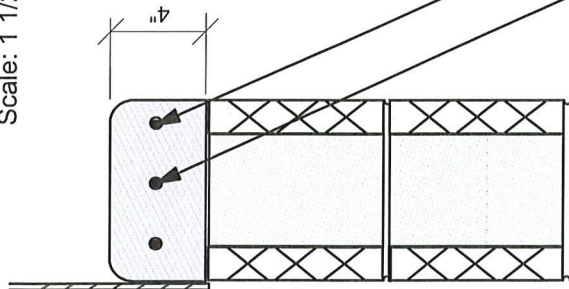
ELEVATION VIEW OF SILL

Scale: 3/4" = 1'-0"

SEE LINTEL DETAILS IN THIS MANUAL FOR
HEAD CONDITION

(2) # 4 X OPENING
LESS 4"

(1) # 4 X 18" LONG + 4" HOOK
AT EACH END



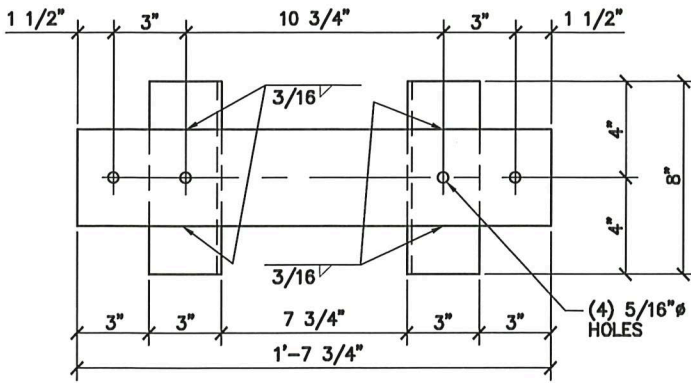
SILL DETAIL

Scale: 1 1/2" = 1'-0"

HIGH TEMPERATURE LININGS

TYPICAL JAMB AND WINDOW SILL

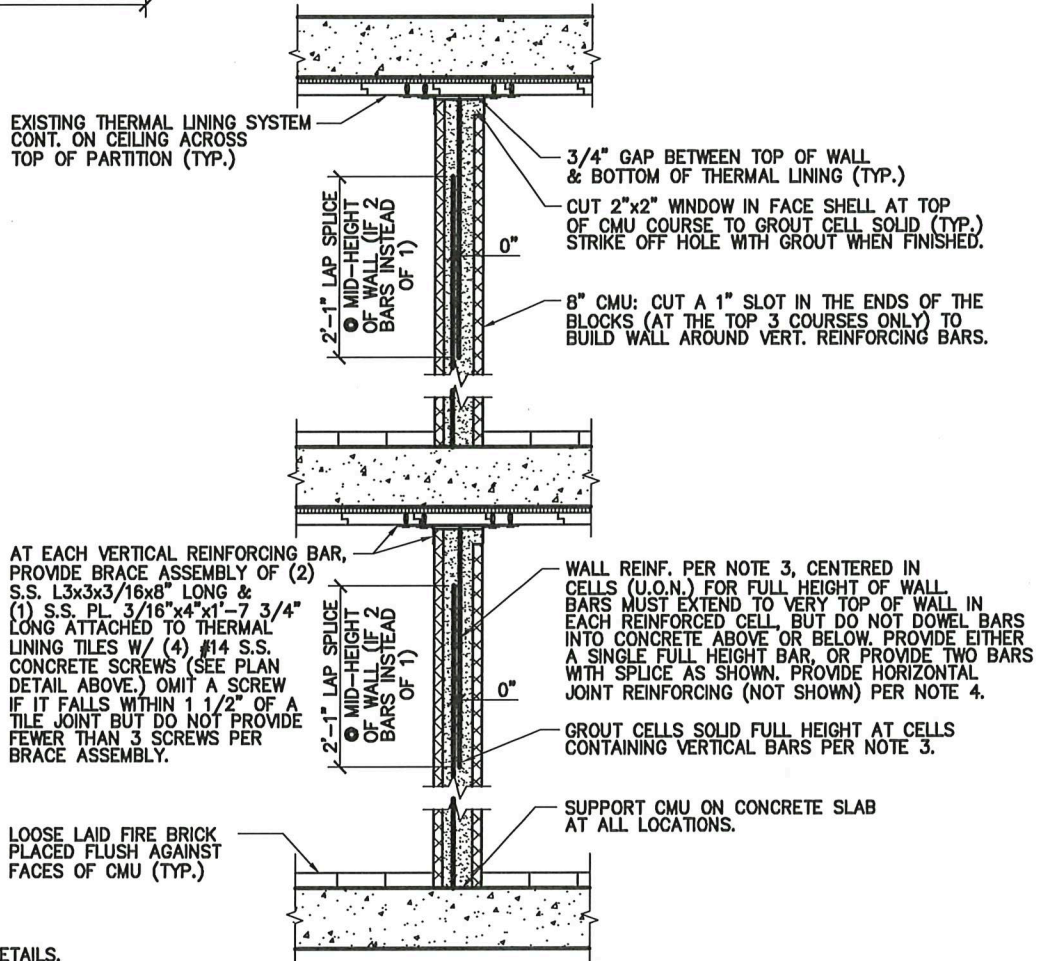
2013



NOTES:

- ENTIRE ASSEMBLY SHALL BE ON SITE PRIOR TO CONSTRUCTION OF MASONRY WALLS. SET ASSEMBLY ON BLOCK ADJACENT TO BLOCK THAT WILL BE GROUTED. ONCE GROUTED BLOCK IS IN PLACE, SLIDE ASSEMBLY INTO PLACE, LIFT, AND ATTACH TO THERMAL LINING TILES ABOVE.

PLAN DETAIL OF BRACE



NOTES:

- SEE DETAIL 1/SK-3 FOR TYPICAL LINTEL DETAILS.
- PROVIDE FULL 8" TALL COURSE AT TOPS OF ALL WALLS. IF WALL DOES NOT COURSE HORIZONTALLY, PROVIDE SHORT COURSE WITHIN WALL LENGTH AT ANY LOCATION OTHER THAN AT ENDS OF WALL OR AT DOOR OR WINDOW JAMBS.
- PROVIDE #4 VERTICAL WALL REINFORCING BAR AT EVERY JAMB, AT ENDS OF ALL WALLS, AT EACH CELL ON EITHER SIDE OF EXPANSION JOINTS, AND AT 24" O.C. MAX. IN BETWEEN THOSE OTHER LOCATIONS. GROUT ALL CELLS WITH REINFORCING SOLID FOR FULL HEIGHT OF WALL WITH 3,000 PSI GROUT PER ASTM C-476.
- PROVIDE HORIZONTAL JOINT REINFORCING AT 16" O.C. MAX. VERTICALLY IN WALLS. JOINT REINFORCING SHALL EXTEND FULLY TO ENDS OF EVERY WALL LENGTH.
- PROVIDE 2-CELL NORMAL WEIGHT CONCRETE BLOCK CONFORMING TO ASTM C-90. PROVIDE UNITS WITH MINIMUM AVERAGE NET-AREA COMPRESSIVE STRENGTH OF 1,900 PSI, WITH MORTAR THAT CONFORMS TO ASTM C-270, TYPE S AND WITH INTEGRAL WATER REPELLENT ADMIXTURE IN THE CMU (AT BATCH PLANT) AND ADDED TO THE MORTAR.
- PROVIDE BULLNOSED CMU AT ALL JAMBS, AT WALL CORNERS, AND AT ENDS OF WALLS THAT DO NOT INTERSECT OTHER WALLS.

WALL SECTION

TYPICAL NON-BEARING MASONRY WALL REINFORCING AND BRACING DETAILS



PROJECT: BUTLER COUNTY C.C. BURN BUILDING – 2020 STRUCTURAL EVALUATION

DRAWING TITLE: TYP. MASONRY WALL REINF. & BRACING DETAILS

EL&A NO.: 20018

Elliott, LeBoeuf & McElwain
8001 Forbes Place, Suite 201
Springfield, VA 22151

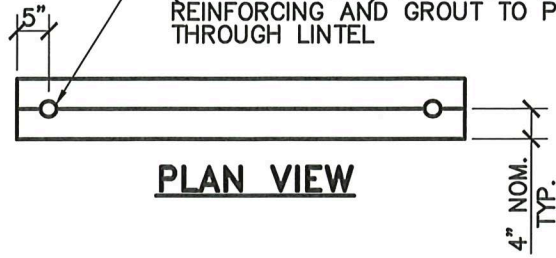
Phone (703) 321-2100
Fax (703) 321-2112

DATE: 9/3/2020

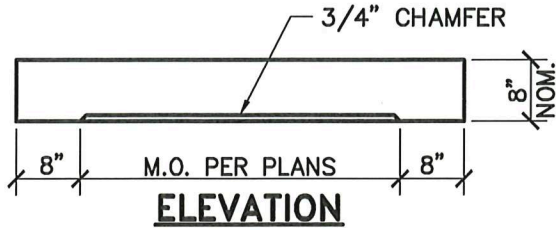
REF. DWG.:

DRAWING NO.: SK-2

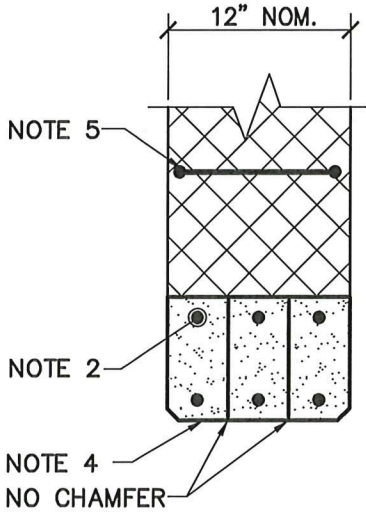
1" TO 1 1/8" RADIUS SEMI-CIRCLE
(IN 4x8 LINTELS) TO ALLOW VERTICAL
REINFORCING AND GROUT TO PASS
THROUGH LINTEL



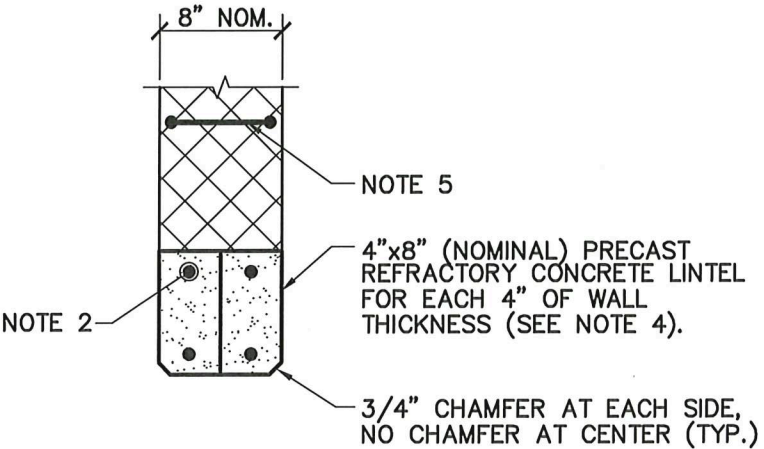
PLAN VIEW



ELEVATION



SECTION AT 12" CMU




SECTION AT 8" CMU

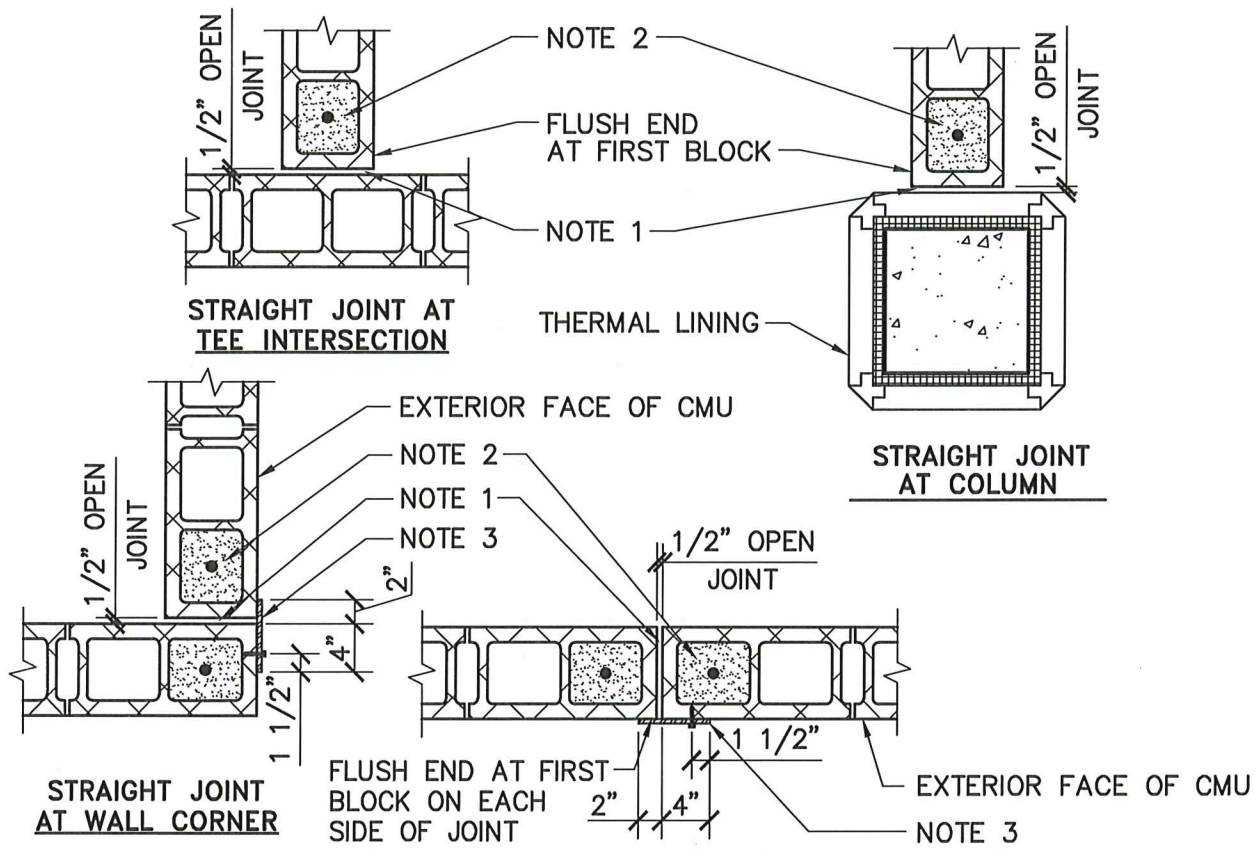
NOTES:

1. THIS DETAIL APPLIES TO ALL CMU DOOR AND WINDOW OPENINGS.
2. (1) #4 TOP AND BOTTOM IN EACH 4"x8" LINTEL.
3. BEAR LINTELS ON WALL FOR 8" AT EACH END.
4. PROVIDE PRECAST REFRACTORY CONCRETE LINTELS, MANUFACTURED BY HIGH TEMPERATURE LININGS OF WHITE STONE, VA: (800) 411-6313.
5. PROVIDE HORIZONTAL JOINT REINFORCING IN FIRST BED JOINT.

**TYPICAL REFRACTORY
CONCRETE LINTEL DETAILS**



PROJECT: BUTLER COUNTY C.C. BURN BUILDING – 2020 STRUCTURAL EVALUATION	
DRAWING TITLE: TYPICAL REFRACTORY CONCRETE LINTEL DETAILS	EL&A NO.: 20018
 Elliott, LeBoeuf & McElwain 8001 Forbes Place, Suite 201 Springfield, VA 22151	DATE: 9/3/2020
	REF. DWG.:
	DRAWING NO.: SK-3
Phone (703) 321-2100 Fax (703) 321-2112	



NOTES:

STRAIGHT JOINT ALONG EXTERIOR WALL LENGTH

1. FORM JOINT WITH 1/2" PLYWOOD OR COMPRESSIBLE STYROFOAM. STRIP AFTER WALL IS COMPLETED.
2. REINFORCE & GROUT FIRST CELL SOLID FULL HEIGHT ON EACH SIDE OF JOINT.
3. AT EXTERIOR WALL JOINTS, PROVIDE S.S. 3/16"x6" PL. TO COVER JOINT FOR FULL HEIGHT OF WALL, FROM 1" BELOW TOP OF WALL TO 1" ABOVE BOTTOM OF WALL. PROVIDE 1/4"Ø x 2 3/4" LONG S.S. AGGRE-GATOR 300 SERIES CONCRETE SCREWS BY ELCO CONSTRUCTION, WITH HEX WASHER HEAD AND OVERSIZED S.S. WASHERS AT 2'-0" O.C. MAX. IN 5/16"x1 1/2" LONG VERTICAL SLOTTED HOLES (MIN. 5 PER PL.). FOR TOP TWO FASTENERS, PLACE FASTENER AT TOP OF SLOT. FOR BOTTOM TWO FASTENERS, PLACE FASTENER AT BOTTOM OF SLOT. FOR ALL OTHER FASTENERS, PLACE FASTENER IN MIDDLE OF SLOT. INSTALL FASTENERS UNTIL THEY ARE SNUG, BUT NOT OVER-TIGHTENED.

PLAN DETAILS – OPEN JOINTS IN WALLS

1
 SK-4 | SK-4 NOT TO SCALE

PROJECT: BUTLER COUNTY C.C. BURN BUILDING – 2020 STRUCTURAL EVALUATION

DRAWING TITLE: PLAN DETAILS – OPEN JOINTS IN WALLS

EL&A NO.: 20018

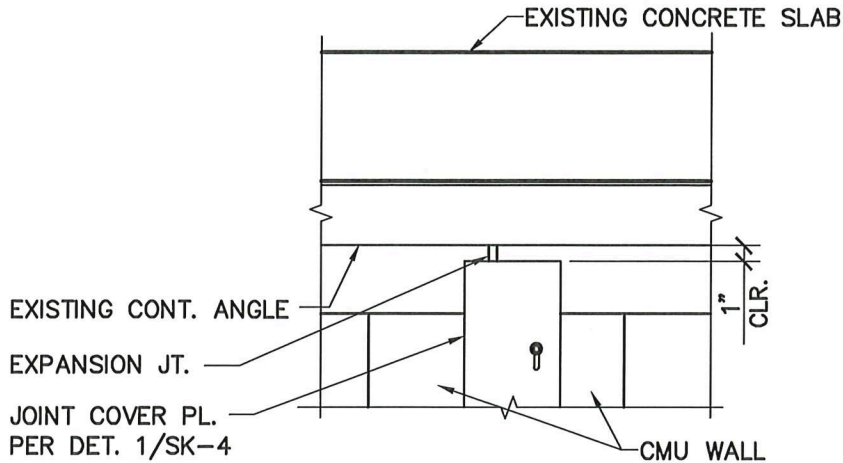
DATE: 9/3/2020

Elliott, LeBoeuf & McElwain
 8001 Forbes Place, Suite 201
 Springfield, VA 22151

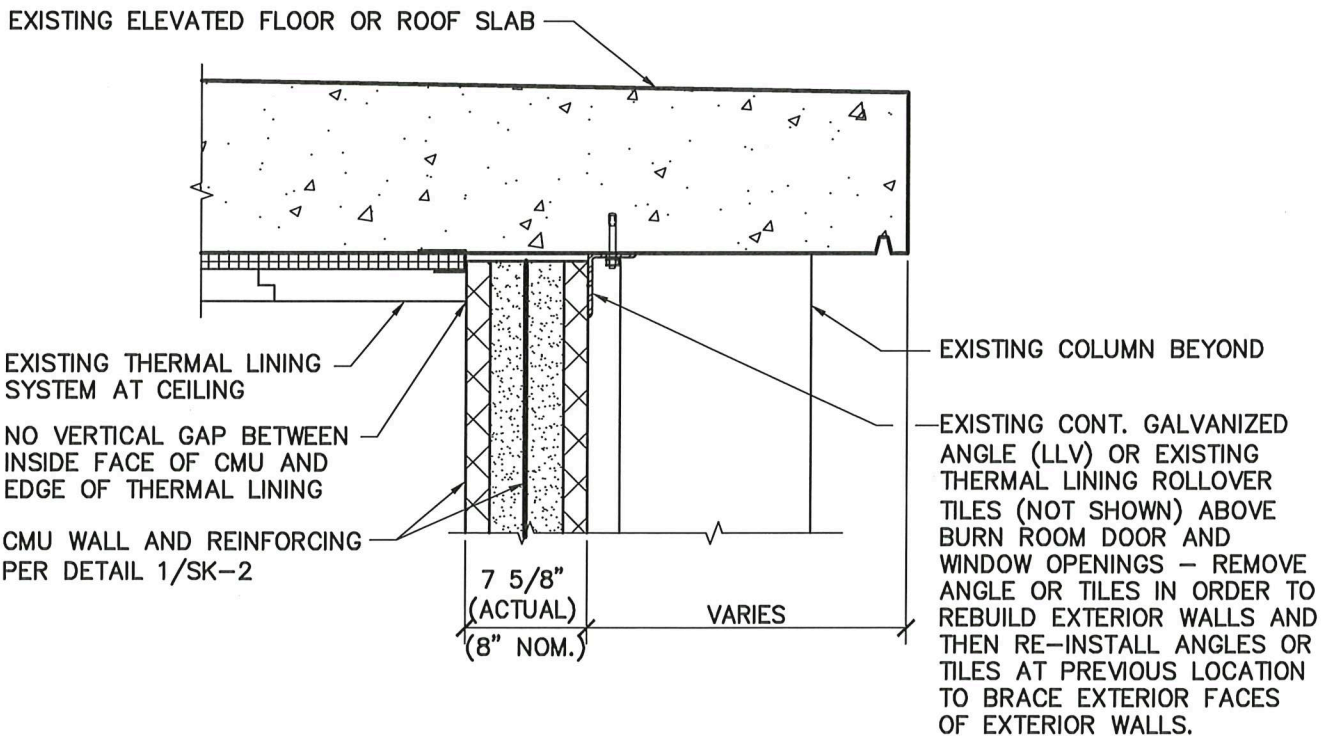
Phone (703) 321-2100
 Fax (703) 321-2112

REF. DWG.:

DRAWING NO.: SK-4




ELEVATION – CONDITION WHERE BRACING ANGLE IS CONTINUOUS ACROSS EXPANSION JOINT



TYPICAL SECTION – TOP OF EXTERIOR NON-BEARING MASONRY WALLS

1
SK-5 | SK-5 NOT TO SCALE

PROJECT: BUTLER COUNTY C.C. BURN BUILDING – 2020 STRUCTURAL EVALUATION	
DRAWING TITLE: TOP OF EXT. NON-BEARING MASONRY WALLS	EL&A NO.: 20018
 Elliott, LeBoeuf & McElwain 8001 Forbes Place, Suite 201 Springfield, VA 22151	DATE: 9/3/2020
	REF. DWG.:
	DRAWING NO.: SK-5
Phone (703) 321-2100 Fax (703) 321-2112	